

Waltham Forest

Deanery Vision

Foreword

*"In the context of where God has called us to be the church today,
what is God requiring of us and encouraging us towards?"*

This was the challenge set by the Deanery Vision project launched by the Diocese of Chelmsford in February 2006.

From the outset, deaneries and parishes were reassured that this project was not about reducing clergy numbers or about pastoral reorganisation. It is rather about two key aspects of our discipleship: (1) gaining a clear picture of the reality of the communities, networks and groups with, among and across whom we live, work and worship; and (2) seeing how God is currently working through us within these communities, networks and groups, and prayerfully trying to see how and where God may be directing us in our future discipleship.

Waltham Forest Deanery has pulled together and engaged with this project on that basis. We feel that it has provided us a good opportunity to promote God's work in our London Borough to the whole Diocese. It has also allowed an opportunity for the Deanery as a whole and parishes individually to hear and celebrate their own and others' good news stories, and to share and draw strength together from the challenges they face.

This project has succeeded where previous ones have failed as it was not simply imposed from the Diocese, but the Deanery was encouraged to make the project its own. Our focus was to plan for church growth rather than for mission failure, and we agreed a process putting the parishes' experiences at the heart of the exercise and providing consultation at each stage.

- A parish profile was produced by each parish with deanery officers available to facilitate this or to provide assistance in the process. In preparation for this, parishes were encouraged to complete a 100-word parish vision statement as requested by the Diocese.
- A deanery away-day was organised to reflect on parish visions and to brainstorm the idea of a deanery vision. All clergy, readers, synod representatives, churchwardens and deanery workers were invited, though not all parishes were represented on the day.

What we have achieved is a clear and comparable snapshot of ministry and mission within Waltham Forest in 2007. The Deanery displays a rich diversity of traditions and expression, of experience and approach. What comes across strongly, however, is that, despite the many differences, there is still much that is shared in common and a mutual recognition of the faithfulness of each other's response to the gospel imperative.

Colin Setchfield
Lay Chair of Waltham Forest Deanery

Contents

Page 1	Title – Waltham Forest Deanery Vision
Page 2	Foreword by the Lay Chair of Waltham Forest Deanery
Page 3	Contents
Page 4	The Anglican Deanery of Waltham Forest
Page 5	Waltham Forest in Context
Page 7	Map of Waltham Forest Deanery
Page 8	The Parishes
Page 51	Deanery Away-Day
Page 53	Reflections by the Deanery Children’s Work Development Worker
Page 55	‘Towards a Deanery Strategy?’ by the Deanery Development Officer
Page 58	Deanery Statistics
Page 63	Reflections on the Future by the Area Dean of Waltham Forest
Page 65	Diocesan Guidelines for a Deanery Vision
Page 67	Diocesan and Barking Area Vision Statements
Page 68	Endnote / Acknowledgements
Page 69	Deanery Officers’ Contact Details

The Anglican Deanery of Waltham Forest

The Deanery is a collection of neighbouring parishes covering the London Borough of Waltham Forest. It is part of the Diocese of Chelmsford and Archdeaconry of West Ham. The Diocese is divided into three Episcopal areas: each with its own area bishop. Waltham Forest is part of the Barking Area; the current Bishop of Barking lives in Walthamstow.

The Deanery comprises the parishes that remain or were formed out of the ancient parishes of Chingford, Walthamstow, Low Leyton, and part of that of Wanstead. From the mid-19th century, new ecclesiastical districts were created in order to take account of the social and population changes witnessed in the area. From a high of 28 parishes/districts, two conventional districts and five missions in 1938, the second half of the 20th century saw the union of various parishes and the closure of churches. Currently, there are 20 parishes and 24 churches.

When part of Essex, Chingford and Walthamstow/Leyton fell within different administrative areas and, with the North Circular road cutting across the northernmost part of Walthamstow, Chingford's disconnection with the rest of the Borough/Deanery is still occasionally felt on both sides. Additionally, Leytonstone is now seen as a distinct and separate area to Leyton; and Highams Park, though originally part of Walthamstow, is now more closely aligned with Chingford.

The Deanery reflects the diversity of traditions found within the Church of England – catholic, charismatic, central, evangelical, and liberal. Four parishes that are opposed to the ordination of women to the priesthood have petitioned for extended Episcopal oversight; this places them under the Bishop of Richborough for pastoral care and sacramental ministry. In all except one other parish, the ministry of women within the priesthood is accepted, and the Deanery currently has six ordained female ministers.

Among the parishes, the clergy of the five opposed to women's priestly ministry, as well as joining in Deanery Chapter, also meet together separately. The parishes covering the E4 postcode (Chingford and Highams Park) are part of an informal group – retaining their separate identities but sharing resources and working together as appropriate. Formal schemes exist, which have created a Walthamstow Team Ministry in central part of that town (involving four churches) and a Leyton Group Ministry comprising three individual parishes.

Within the Deanery there are formal and informal inter-denominational groups of neighbouring churches, in which the Anglican churches participate; at Higham Hill, Anglicans and Baptists have formally entered into a Local Ecumenical Project together.

The self-descriptive profiles within this document give more details about each of the parishes.

Colin Setchfield
Lay Chair of Waltham Forest Deanery

Waltham Forest in Context

The London Borough of Waltham Forest is in the north-east of London. Its neighbours are Redbridge to the east, Hackney and Newham to the south, and Haringey and Enfield to the west. The North Circular road (A406) separates the north of the Borough from the centre and south. The Borough is on the tip of the London-Stansted-Cambridge-Peterborough growth area and next to the Thames Gateway Stratford City development, which includes part of the 2012 Olympic site.

Waltham Forest covers an area of 3,860 hectares (almost 10,000 acres). It is predominantly residential interspersed with areas of industry and open land. To the north and east, the Borough also contains part of Epping Forest; the western boundary runs through the Lee Valley Regional Park. These two areas provide for recreation and nature conservation.

Within the built-up area of the Borough, a broad distinction can be made between the northern and southern areas. The southern parts of the Borough - Leyton, Leytonstone and Walthamstow - were mainly developed in the latter part of the Victorian era. In particular they have traditionally provided homes for first-time buyers. Many have invested in their homes and so brought about a gradual upgrading in the local private housing stock over the past decade. Industrial and commercial premises are often located very close to houses, and whilst the provision of social and community facilities like schools may have met the standards of the day, they are now considered unsatisfactory in some cases. In contrast, the northern parts of the Borough are generally more open in character with houses built to higher specifications and relatively well distributed open spaces and community facilities (although the continuing provision of the latter is currently under threat).

Waltham Forest has good external transport links, with easy access to the M11, M25, A406 and A11 although air quality is an issue around congested routes such as the A406 and A11/M11 link road. There are rail connections to the city and two Underground lines to Central London. Walthamstow bus station is the third busiest in the capital and provides a transport hub for the Borough.

Around 225,000 people live in Waltham Forest and it has around 89,800 households. The population is expected to rise to around 235,000 by 2012. Residents are relatively young - over a third are under 25, which is just over the UK average, and around 35% are aged 25-44, which is much higher than the UK average. At the time of the 2001 Census 5% of residents stated they were disabled, which is below average.

Waltham Forest is the tenth most ethnically diverse of the 33 London Boroughs. It has changed in ethnic composition since 1991, even though the population total has grown by only a small amount. The white population group in Waltham Forest has fallen by 17,000 over the decade since the 1991 Census, when this group was 74.4% of the population. The 2001 Census shows this proportion is now 64.5%, a total of 140,803 people in all the white groups including the Irish, people from the European Union and elsewhere. The proportion of the population belonging to a minority ethnic group has risen from 25.6% in

the 1991 Census to 35.5% of the resident population in 2001. The Black Caribbean group is still the largest minority ethnic group in Waltham Forest. The population was 14,410 in 1991, rising to 17,797 in 2001, a growth of 24%. Black Caribbean people are 8.2% of the total population. The second largest minority ethnic group in Waltham Forest is the Pakistani population. Many other ethnic groups are represented in the Borough.

Waltham Forest also has a diverse range of faith communities. In the 2001 Census 56.8% of residents identified themselves as Christian, 15.1% as Muslim (this being the 3rd largest Muslim population in London), 1.8% as Hindu, 0.7% as Jewish, 0.6% as Sikh and 0.4% as Buddhist. Just under a quarter of residents claimed to be non-religious or did not state their religion in the Census.

Waltham Forest contains some of the most deprived areas in the country and as a whole is ranked 25th most deprived out of the 354 local authority areas in England.

Walthamstow, with its famous street market, is the Borough's largest shopping centre. There are also seven smaller shopping centres (Leytonstone, Bakers Arms, Leyton High Road, Highams Park, Wood Street, North and South Chingford), reasonably well distributed throughout the Borough, as well as a large number of local parades and corner shops.

The economy of Waltham Forest cannot be considered in isolation. Many Waltham Forest residents commute to jobs in other areas, notably central London. The prospects for many businesses based in the Borough depends on the performance of the wider regional economy.

The economy of East London has not been as buoyant as other parts of the south-east, because it was strongly affected by closures of traditional industries, such as the furniture and footwear industries in Waltham Forest, and did not gain as many jobs in the growth industries of the 1980's (e.g. office jobs, high technology industries) as West London. Indeed, even where new jobs were created such as in Docklands, there is often a mismatch between the skills needed for those jobs, and the skills possessed by local people. The number of benefit claimants in the southern part of the Borough still remains well above the London average.

The rising cost of housing in the south-east has prevented many people on low and middle range incomes from buying their own homes. This, coupled with the high costs of privately rented accommodation and the constraints on Council house building, has led to increasing levels of homelessness in the Borough.

The increasing use of private cars and the additional numbers of people travelling into or round London have caused severe traffic congestion in the Borough.

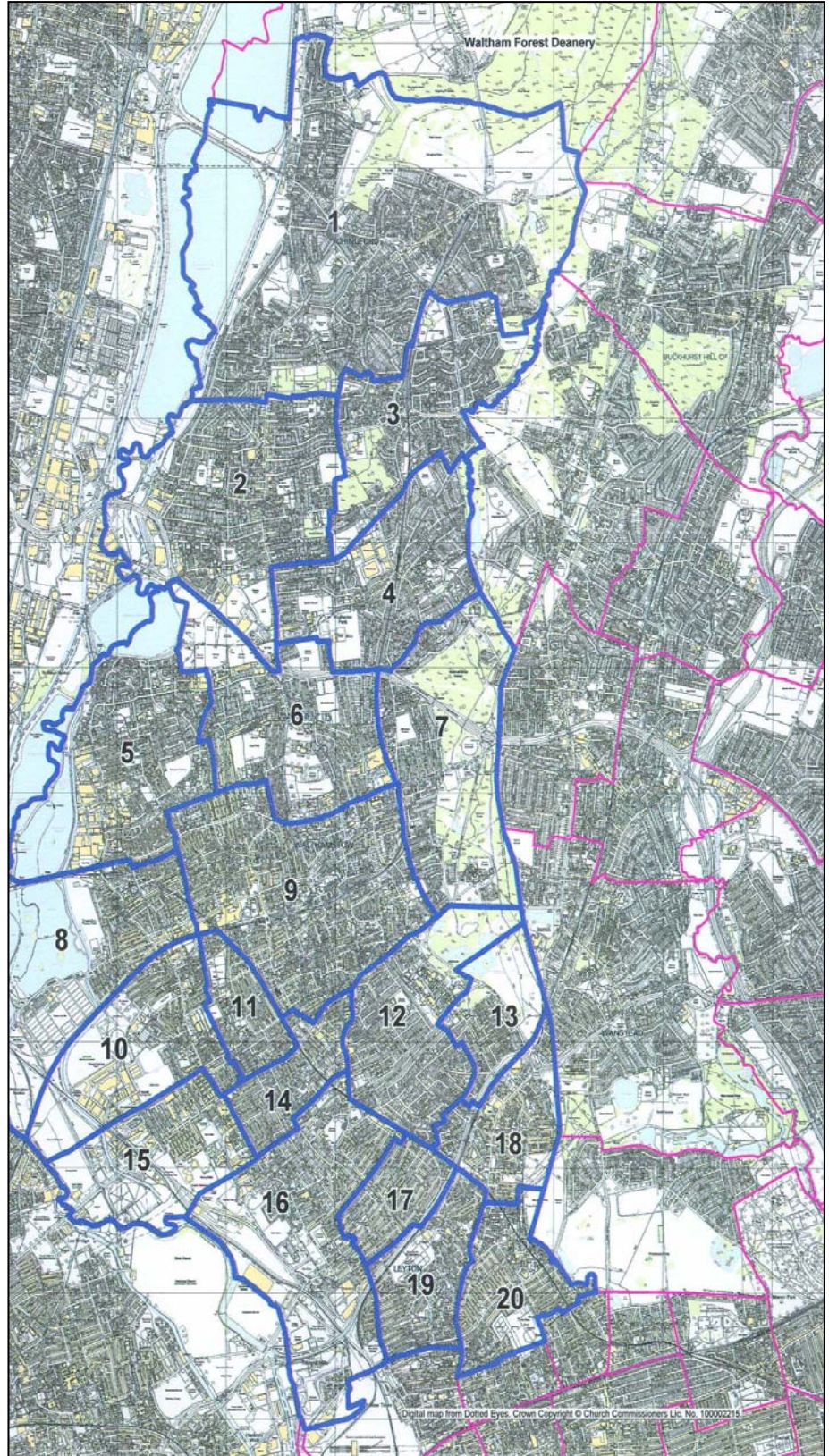
Waltham Forest will jointly host the 2012 Olympic Games, which will radically change east London, hopefully bringing opportunities for regeneration and employment to the area.

Steven Saxby

from information taken from the Borough's Local Area Agreement, April 2006 and Unitary Development Plan first review, March 2006.

Map of Waltham Forest Deanery

1	Chingford St Peter & St. Paul
2	Chingford St Edmund
3	Chingford St Anne
4	Highams Park All Saints
5	Walthamstow St Andrew
6	Walthamstow St John
7	Walthamstow St Peter-in-the-Forest
8	Walthamstow St Michael ...
9	Walthamstow (Team Ministry)
10	Walthamstow St Saviour
11	Walthamstow St Barnabas ...
12	Leyton St Catherine & St Paul
13	Leytonstone St Andrew
14	Leyton All Saints
15	Leyton Emmanuel
16	Leyton St Mary ...
17	Leyton Christ Church
18	Leytonstone St John the Baptist
19	Harrow Green Holy Trinity ...
20	Leytonstone St Margaret ...



St Peter and St Paul, Chingford

Rector

Fr Tom Page
The Rectory, 2 The Green Walk,
Chingford, E4 7ER.
Tel: 020 8529 1291
E-mail: frtompage@priest.com
Parish website: www.chingfordparish.co.uk



The Parish

St Peter & St Paul (including All Saints, “the Old Church”) is a parish of around 22,000 souls situated on the edge of the Deanery adjacent to Diocese of London and the Epping Forest Deanery. Housing is very expensive in this area making it virtually impossible for most first time buyers to consider living here. We are currently engaged in a major review of the way the Parish works which may lead to the development of ministry teams. This is a very exciting and challenging time for the Parish.

People

In addition to the rector, the Parish is served by an assistant priest (Revd Claire Wilson), a curate (Fr Darren Collins), one Reader (Diana Kennedy), one Honorary Reader (Bert Jewett) and a retired priest (Rodney Matthews). Lay people are engaged in various areas of leadership, for example as leaders of midweek prayers, leaders in children’s fresh expressions of church (Chingford Cherubs), running the Sunday School at St Peter and St Paul’s and the Sunday Club at Old Church. Many people are involved with leading music. The choir includes seventeen boys, thirty girls, twenty five men and thirty ladies. At Christmas about one hundred and twenty people were involved with the choir and bell ringing. Vocations are being fostered, with three people exploring ordained ministry and two exploring Reader ministry.

The clergy take a large number of occasional offices, including around two hundred funerals each year.

Links with others

The Parish is involved with three primary schools, has some contact with Davenant Foundation School in Debden and with two schools in South Chingford. There is also limited involvement with Chingford Foundation School. The clergy and others serve as governors of various schools.

Links also exist with the Sea Cadets in Hackney and, within Chingford, with uniformed organisations, five 5-aside football teams, five residential care homes and Enterprise House, a community of retired people in sheltered housing. The Parish is active within the community, not least through ministry at Café Nero, through home visits, the Community Forum, singing at Thorpe Coombe and involvement with the annual Chingford Festival.

Various groups use church facilities, including toddler groups, an elderly dancing group, Slimming World, a Naturalist group, the Church Ladies Guild (where between fifty and seventy people gather fortnightly) and the Purple Praise music group. Afternoon tea is provided weekly for the elderly and for people with learning disabilities. St Peter and St Paul’s is also used for concerts; the choir has a wide reach through its touring.

The parish is part of Chingford Churches Together and the Anglican E4 group. The curate sits on the committee for Waltham Forest Youth for Christ and a churchwarden (Ted Cooke) is Chair of the Standing Advisory Committee for Religious Education (SACRE) and on the Faith Communities core group. The clergy provide chaplaincy for British Legion, the RAF Association, the Sea Cadets and, two years ago, the Mayor. The rector is the Barking Episcopal Area NSM officer and a member of the new Diocesan Theological Issues Group. The Reader is a member of Diocesan Synod. Collectively the clergy provide spiritual direction to seven people.

Unique selling points

There is much positive, evangelistic work within the Parish, not least with children. The choir brings children and their families into the church. There is children's work through schools. In addition, an exciting development is "Chingford Cherubs", a mid-week act of worship for toddlers and carers which is attracting seventy or so people, mostly non-church families, and is the second biggest service all week. Other new developments include work at Yardley School and the development of home bible-study groups. There is also much ministry among the elderly, as mentioned above. There are aspirations to develop work with young people, stewardship work and a Ministry Leadership Team,

The Parish is also pleased that it has strong lay involvement from loving and committed people, of how it engages in 'bread and butter' parish ministry and of its work among the marginalised. The growth of the E4 ministry is also positive, witnessed by the licensing of the E4 ministers on a bus!

Buildings

The Parish has two churches, both Grade II* listed buildings. All Saints, the original Parish Church (also known as The Old Church), is a Norman church which became derelict but then was restored and brought back into use after St Peter and St Paul's was built in the Victorian period as the new Parish Church. Both churches have halls and the former church of St Francis is now an additional Vestry Hall. The Parish also owns two houses.

Both churches are of considerable historical and cultural interest and St Peter and St Paul's is regularly a venue for concerts. A huge amount of work has been done on both buildings but there remain some challenges at St Peter and St Paul within the church, hall and churchyard (the last the responsibility of the Local Authority).

Reference to the extensive use of the buildings is made above.

Deanery

There is much the Parish can offer the Deanery, not least its experience within the E4 group of working together with other churches.

The Parish is willing to share more of its musical tradition and its work among children.

The Parish would welcome help from the Deanery in learning how to maximise financial use of its properties. It is also keen to continue accessing the pool of expertise, for example the benefits it received from recent work with the Deanery Children's Work Development Worker (Jean Elliott).

St Edmund, Chingford



Vicar

Revd Christopher Owens
St Edmund's Vicarage, Larkwood Road,
South Chingford, E4 9DS.

Tel: 020 8529 5226

E-mail: christopher@owenseaster.freeserve.co.uk

Parish Website: www.stedmund.org.uk

The Parish

The Parish of St Edmund, South Chingford is an area of land, almost entirely residential, in the London Borough of Waltham Forest, north of the North Circular Road and south of Chingford Mount Cemetery, and east of the Reservoirs and west of Larkwood Park, but not including the land east of Chingford Road between Higham Station Avenue and the North Circular Road. It has a population of about 15,000. It has a relatively affluent population, with occasional pockets of deprivation, notably in the south-west corner of the Parish in an area which used to be called the Chingford Hall Estate.

People

In addition to the Vicar, St Edmund's has a licensed Reader (Michael Kendall-Torry) and a newly-appointed voluntary pastoral assistant (Pauline Setchfield). The congregation play an important role in the worship on Sundays, leading intercessions, reading lessons, serving at communion and enhancing worship with a singing group. Lay communion ministers play an important role in home communion visiting.

Links with others

St Edmund's has very strong links both with the E4 group of Anglican parish churches and with the ecumenical group of South Chingford churches. The ministers of the E4 churches (All Saints, Highams Park, St Anne's, St Peter and St Paul's and St Edmund's) meet regularly for prayer and meet quarterly with churchwardens. Annually, they also meet with Readers for an away day.

The Churches of South Chingford (Christ the King Roman Catholic Church, St John's, Walthamstow, South Chingford Congregationalist Church and New Road Methodist Church) exchange preachers, co-ordinate assembly links with schools and unite for an act of witness on Good Friday. St Edmund's works particularly closely with the Methodist church; both church councils nominate a representative from the other church, have held a joint away day, collaborate on seasonal events (e.g. a living crib and a joint bazaar) and attend each other's festival services. The Fountain of Life Church, a West African congregation, meets in the church hall on Sunday lunchtimes and has been involved in the carol service.

The church has links through assemblies with Ainslie Wood School, where the Vicar is a governor, and Larkwood School. Pupils visit the church from both these schools and from Chase Lane School, where a member of the congregation is a governor.

The church has an important relationship with the Chingford branch of the Royal British Legion, to whom the Vicar is chaplain and a member of the congregation serves on the welfare committee. Several commemorative services a year are held in the church and at the branch headquarters. The Vicar is also chaplain to the Royal Naval Association and hosts a monthly service in the local sheltered housing unit. A

member of the congregation is currently on an experience exchange placement with USPG and the church has links with a church in Myanmar.

Mission

Our mission statement:

Our aim is to worship God together; to be a centre of spiritual support; to carry on the work of Christ; and to spread the Christian message.

Our vision:

In the light of God's call, and our situation here, our vision should be: an open, welcoming and inclusive church...

Actively engaged in the community, particularly in working with teenagers/disaffected youth, providing opportunities for activities;

In partnership with local Methodists and Anglicans at Chingford Mount and Highams Park;

In dialogue with local Muslims;

Working collaboratively with secular organisations;

Where the heritage of our buildings is maintained to provide a space for the community to explore its spirituality and to celebrate together;

Where the victory of God's love is shared with all unconditionally and celebrated in worship and prayer.

Sunday worship is key to our life together at St Edmund's. We are good at welcoming people and we aim to provide quality worship, which celebrates the richness of the seasons of our Christian year and includes a wealth and variety of preaching. We review our worship regularly and have worked hard over the past few years to create a style of liturgy which meets different needs. We have developed an all-age liturgy called the "Together Service" as a way of welcoming families, particularly those connected with our uniformed organisations. Our Junior Church has four staff and has recently started an end-of-term breakfast. Our links with other local churches are strong and meaningful.

Occasional Offices also form an important part of our mission. The Vicar conducts about four weddings a year, twelve baptisms and one or two funerals a week (which he shares with the Reader). We decided to develop a way of encouraging those who are new or on the fringes of our church by holding three annual services. On the Feast of the Baptism of Christ, new baptismal families are invited. On the eve of St Valentine's Day, newly-wed couples are invited. On the feast of All Souls a requiem mass is celebrated, to which families who have been recently bereaved are invited.

Through the many and varied groups in our church hall over 1500 people, both old and young, come through our doors each week. Activities held there include: Rainbows, Brownies and Guides; dancing schools; junior football and kickboxing; pensioners' groups; short-mat bowling; table tennis, wine appreciation; floristry; metal-detecting; dog-training; keep fit; angling; photography and societies for those affected by Multiple Sclerosis and Parkinson's Disease.

We hope to be able to make the church more accessible to people and open her doors more often during the week.

The greatest challenges we face are in making new disciples, in improving our pastoral care and in discerning the future of our inter-parochial and ecumenical life.

Buildings

The church is in good condition, having been well renovated ten years ago. The church hall is also in reasonable condition and is being gradually modernised and renovated.

Deanery

St Edmund's strongest links are with her geographical neighbouring churches in the E4 and South Chingford groups, which have been carefully grown and nurtured over the past few years. St Edmund's would be delighted to share with others the experience they have of working together with other churches in this way and in learning from others about helpful dialogue with local Muslims.

St Anne, Chingford



Vicar

Revd Jude Bullock
200a Larkshall Road,
Chingford, E4 6NP.
Tel: 020 8529 4740
E-mail: judebullock@aol.com
Parish website: stanneE4.milesconsulting.co.uk

The Parish

St Anne's serves the community of Chingford Hatch, a mainly residential district that includes both ends of the wealth spectrum. It is home to a considerable number of retired folk as well as those in work who are unlikely to move. Also in the Parish is the 'Friday Hill' estate, containing a large number of council-provided dwellings.

People

St Anne's is served by a commissioned Ministry Leadership Team. Communal ministry is taken seriously with the Vicar and two Readers (Jenny Howland and Peter Thornton) serving as part of the wider team. The congregation includes a number of trained counsellors and healers. The Parish has a team of bereavement visitors.

Links with others

St Anne's is part of the Anglican E4 group of churches in Chingford and engages with other denominations, not least through 'Churches Together in North Chingford' which runs, among other activities, an ecumenical lent study group. There are no other faith community organisations in the Parish but the Vicar maintains his previous links with the East London Three Faiths Forum.

There are two primary schools and one secondary school in the Parish and there are strong links with one of the primaries.

The Vicar visits Chingford Hospital on a monthly basis.

One churchwarden is on the Deanery Standing and Pastoral Committee.

Both Readers have been involved with the teaching of the Diocese's Christian Studies Course.

Various organisations use the church hall and there are particularly strong links with the Friday morning Toddler Club.

The church has supports several charities. Each month a mini-market is held for a specific charity and a Simple Lunch for Christian Aid. Over the last year the church has actively supported "One Life", a charity based in Chingford that has been set up to help accommodate, feed and educate the children of Nseleni and surrounding districts, Kwazulu, South Africa.

Mission

The congregation is currently seeking to renew itself for evangelism. It has already run an Alpha Course (much of it re-written from a liberal-catholic perspective) and plans are afoot for a post-Easter introductory theology course, especially for those who attended the St Anne's Alpha. The congregation is growing. Bereavement visits form an important aspect of the Parish's mission activity.

St Anne's is a welcoming and accepting church. Some of its strengths are its Ministry Leadership Team, its emphasis on healing and its accessible liturgy, both for adults and for all ages.

Its mission has been helped in recent year by gentle liturgical renewal. The Eucharist remains the foundation from which all else flows. In coming years the Parish would like to develop work with young people. The present congregation is ageing but they are young at heart!

Vision

*In the light of God's call, and our situation here,
our vision
is of a community bound together
by the love of God revealed in Jesus Christ.
A community called to proclaim
the good news of God's kingdom,
by making disciples;
by nurturing faith;
by responding to human need with loving service;
by challenging injustice;
by a proper stewardship of God's creation..
As servants of the kingdom
We celebrate human diversity.
we oppose discrimination and marginalisation,
and actively promote unity and acceptance.
We aim to demonstrate
the love and welcome of Christ
to everyone in this community.*

Buildings

The St Anne's complex includes a modern church and centre and a small area of land beside the centre as a church garden. A large area of land behind the buildings is leased from Waltham Forest.

The church aisle roof needs attention. There are thoughts of installing a west door to the church with a glazed entrance lobby to make the interior visible from the main road.

The centre is used by a pre-school and many others, including a toddlers group, CREST Waltham Forest (Christian Renewal for Education and Social Tasks), uniformed organisations and several sports groups.

Deanery

St Anne's is willing to share with the Deanery its experience of healing ministry and of adapting the Alpha Course to a liberal-catholic tradition.

Like many parishes St. Anne's prides itself on always paying its parish share in full. As numbers in the congregation decrease and become more elderly and the parish share increases this may well not be possible in the future.

All Saints, Highams Park

Vicar

Revd Clinton McGhie
12a Castle Avenue,
Highams Park, E4 9QD.
Tel: 020 8527 3269



The Parish

All Saints, Highams Park is bounded to the East by St Peter-in-the-Forest, to the north by St Anne's parish, to the north-west by St Edmund's parish and to the south, by the North Circular (A406.) The Parish has a population of 11,500 people. It has its own identity as a village, originating in the latter part of the nineteenth century, with most of the housing development, especially the larger owner occupied homes, having been built at the turn of the twentieth century.

People

In addition to the Vicar, All Saints has one Reader, Mr John Farr. All Saints has a tradition of lay involvement in the liturgy. Two members are authorized to administer the chalice. There are others who read the lessons and do the intercessions. We have an organist, who writes and composes musical settings for our Eucharist, two Sunday School teachers, a small choir and an Enrolling Member of the Mother's Union, who leads a vibrant and enthusiastic group of ladies.

A full time Youth Leader and his wife lead the Scouts and Beavers, while a retired Drama Teacher, who is also Hall Secretary, leads the drama group. A retired School Worker organises the fund raising activities for Christian Aid and the Children's Society through the Christingle service, the making of Christmas cards, London Walks and box opening. A Sixth Form School Secretary, who is a play-group leader, the church treasurer and a member of the PCC, organises the Nativity Plays at Christmas Eve each year.

Structure of the buildings and activities

The church is situated on Church Avenue at the junction with Castle Avenue. It is a fairly small, red-brick structure with stone dressing. It was built 109 years ago and is still going strong. It is now in good condition, after the recent refurbishing of the ceiling in the sanctuary and chancel.

Regular Sunday services are held in the church at 8am, 10a and at 6.30pm. The occasional baptism is held at 3pm. The numbers attending 8am and 6.30pm have lessened over the years through the ill health or the death of many of our senior citizens. The sick and shut-ins receive their communion monthly, along with residents in two Rest Homes in the Parish.

The church hall

Beside the church we have a large hall which was built in 1904. It had some structural defects which were recently repaired. At present the hall needs a new roof and ceiling to complete the refurbishment. The hall is the largest centre on this side of the railway lines that is available to the entire community of Highams Park.

The hall is used almost continually throughout each day for all kinds of functions. The other large centre in the Parish is the Methodist Church Hall on the other side of the railway tracks, on Winchester Road.

Our hall is not only a source of income for the Parish, but it is also a centre of social and spiritual events during the week. There is an enthusiastic Sunday School which is held in the hall on the Sundays when there is no church parade. The children are brought into church in time for the communion and the blessing. On the first Sunday of each month the uniformed groups assemble in the hall before and after the Parade Service and process along the pavement, into the church, as an act of witness.

Parish vision

‘The aim and object of All Saints is to continue to reach out to the community in many ways, with the help of others, to make Christ known. Our prayer is that, through the power of the Holy Spirit, many may come to acknowledge Jesus Christ as their personal Lord and Saviour of their lives, and come to worship Him in the fellowship of His Church.’

Activities

The Parish places great emphasis on the need to cater to members of the whole community and not only to our members. All Saints has good links with other local churches: Our Lady of Grace & St Teresa of Avila (RC) in Chingford; the Methodist Church on Winchester Road; the Highams Park Baptist Church on Cavendish Road; and the United Reform Church on Malvern Avenue. There is a strong bond, between the Churches of Highams Park and a wonderful fraternity exists among the clergy. Each quarter one of us provides a working lunch for the group at our residences and we work out strategies for mission and ministry through our united efforts. There is also a quarterly meeting at which the clergy and laity are present. Combined services are held once per quarter, in rotation. In addition, Churches Together in Highams Park is engaged in the joint Lenten Studies and the Good Friday Procession of Witness with a service in two of our churches.

We work together to sponsor a voluntary community care scheme known as CARE Highams Park. This is a registered charity, with a management committee, consisting of clergy and lay - persons from each congregation, and co-opted members of the community. Each year CARE provides a Christmas Day luncheon and entertainment for the lonely and elderly living in Highams Park. We are also engaged, each year, in CARE’s Commissioning Service for its volunteers in one of our churches.

Links with the wider Anglican communities in the E4 area

Our parish enjoys a collaborative working relationship with the other Anglican Churches in the E4 Area with each church maintaining its separate identity. There are quarterly E4 news letters circulated in all the churches, quarterly Swap Sundays for clergy and Readers, and quarterly clergy and churchwardens’ meetings. An annual clergy, Readers and wardens conference is held outside the E4 area. We arrange joint yearly pilgrimages, joint confirmations, a joint induction service, joint clergy prayer times, and joint social activities (barn dance, quiz nights and Hot Topic discussions).

There are several schools in the Parish which have contact with the churches: Handsworth School, Oak Hill School, Selwyn Primary, Highams Park (Grant Maintained) School with 6th Form College, and the Joseph Clarke (visually handicapped) School for children with special needs. The Vicar has close contact with some of these schools.

Deanery

All Saints will continue to co-operate fully with the common life and future vision of the Deanery.

St Andrew, Walthamstow

**Incorporating both St Andrew's Parish Church
and Higham Hill Baptist Church**



Ministers

Revd Michael Land (Anglican Vicar),
The Vicarage, Sutton Road,
Walthamstow, E17 5QA.
Tel: 020 8527 3969
E-mail: Michael@land7249.fslife.co.uk

Revd Keith John (Baptist Minister),
The Manse, 60 Carlton Road,
Walthamstow, E17.
Tel: 020 8531 9096

The Church

In many ways we are different to other churches in the area. We are completely ecumenical. The Anglican Parish Church of St Andrew and the Higham Hill Baptist Church are one in every sense. We share worship, commitments, pastoral care and finance. Our 'meld' became a reality with the signing of our Covenant in May 1984. We do not have a PCC as our church "government" is styled on the Baptist lines where all regular church members have an equal say in the running of the church. This is expressed at our monthly Church Meetings.

Services

We have morning worship each Sunday at 10am with a non-denominational Parade Service on the second Sunday of each month. At this service all our uniformed units present their flags. We have services of Holy Communion at all the other Sunday morning services and each Sunday evening at 6.30 pm. We adopt the policy of an 'open altar': all folk, regardless of age are welcome to partake of the sacraments.

There is Junior Church each Sunday morning, with the exception of Parade services. The children go to their classes after the first hymn and return at the Peace.

Church attendances have slowly but steadily dropped over recent years and now our average Sunday morning congregation is about 60. Approximately 15 children attend Junior Church each week.

Services are led by either of the two Ministers, whilst both are committed to being ecumenical, each leads in his own style, be it Anglican or Baptist.

Theology

At St Andrew's we take seriously the insights of modern scholarship and make those insights relevant to the life of our church. We accept the role of women as priests and support gay men and women to fulfil their calling within the ordained ministry of the church. We believe that the church should take a leading role in the issues of peace and justice and support the work of Christian Aid and other relief agencies in mitigating the plight of the poorest people in our world. We are actively involved in our community and encourage community groups to use our premises, sometimes without payment and never expect them to join us on Sunday, unless they want to, of course! Our mission is to serve the people who live in our area, whether they believe in God or not.

The Parish

The Parish is bounded, roughly, by the North Circular Road to the north, Forest Road to the south, Blackhorse Lane to the west and Chingford Road to the east. It has a population of approximately 15,000. Due to the type of housing in the area the population, for the large part, is transitory. Folk tend to buy the smaller properties and then when the families expand they move on. A high percentage of the local residents are of other faiths and cultures. Many different languages are spoken in the vicinity. This is a diverse area in a constant state of change.

The immediate locale around the church used to be almost village-like with many local shops. Unfortunately the convenience of the local supermarkets has, as it has in many other communities, killed off the business of the small shop-keeper. Now the majority of these 'local' shops have been converted into houses.

Over the last twenty years or so the employment in the area has changed quite dramatically. Local factories such as The London Rubber Company, Bush Boake Alan, Rael Brooke, Britains, Gestetners and Crown Luggage have all closed and gone. There is now no industry of that volume in the vicinity. Now there is the choice of commuting into town each morning or working for the many fast food outlets or supermarkets. The loss of local employment is obviously reflected in the local community.

Outreach

We try, through the various groups that meet on our premises, from the baby clinic through the youth organisations to the clubs for the elderly, to be a Christian example and thereby, maybe, act as a conduit for them to gain access to the church activities and regular Sunday attendances. Where we can we support The Christian Kitchen and also 'Branches', the night and day centre that assists the street dwellers of our area. We publish a magazine, The Link, every two months; we print and distribute about 250 of each issue.

Our building

The building is fairly modern. Several buildings, from a corrugated iron structure in 1871 to a traditional stone and brick building in 1911 to the brick built church we have today, have stood on this site. Each one has been here as place of Christian witness.

Today, as well as the usual church functions, the premises houses the Waltham Forest Carers, a daily Pre-school group, a Handicap Club, Short Mat Bowls, the 60+ Club, a Baby Clinic, Rainbows, Brownies, Guides, Beavers, Cubs, Scouts, Krafty Kids, a Tai Chi group and a dancing club. It is a building that is well used as a community centre.

Our vision

Our vision is to serve our community and thereby our God to the best of our ability, to be an example of Christian love and commitment in this place, and at this time. We are firmly and irrevocably committed to being an ecumenical presence, a Christian presence, a caring presence. We trust in God.

OUR COVENANT

In the belief that the unity of the church is the will of God, we seek to express that unity in the life and work of our churches, the Parish Church of St Andrew and Higham Hill Baptist Church Walthamstow.

We therefore covenant together to share our life as fully as possible seeking to do separately only those things we cannot do together and so work for the common good of all people and for the greater glory of God.

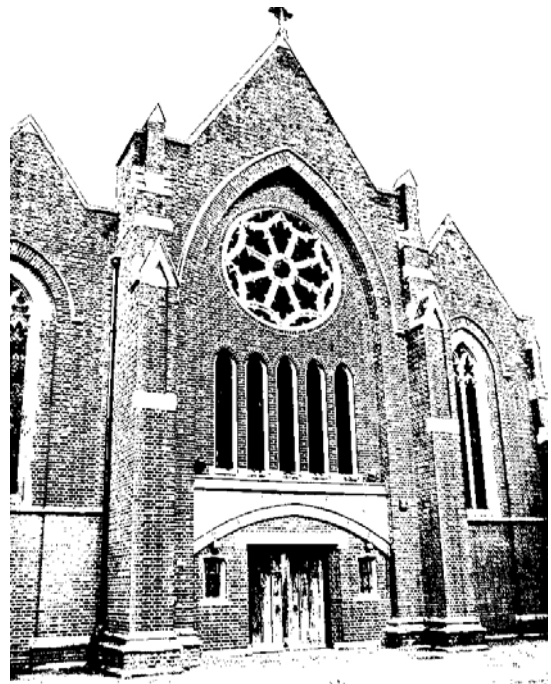
We recognise the denominational differences expressed in the practices of our Churches and we pledge ourselves to remain faithful to our separate denominations. We shall work for the unity of the whole Church and the reconciliation of all people.

We welcome all Christians in our area to share in the work of God's mission on Higham Hill.

St John, Walthamstow

Vicar

Revd Canon Tony Bishop
18 Brookcroft Road,
Walthamstow, E17 4LH.
Tel: 020 8531 6249
E-mail: bishop@fish.co.uk



People

Ministry resources consist of the Vicar and one Reader, Keith Cox. There are, of course, other people who run the Junior Church and other church groups. The Vicar performs the weddings (such as they are) and baptisms and virtually all of the funerals.

We are part of Churches Together in South Chingford and Chapel End, and the ministers in that meet together regularly. We have a slight connection with Spruce Hills Baptist Church, though not as strong as it used to be since their minister left. We used to have a monthly joint Sunday Evening Service with the Churches of the Walthamstow Team, but that has lapsed. There are no places of worship of other faith communities within the Parish, and we do not have any formal contacts with their members.

From time to time parties of children from the local schools come into the church to look around and to have things explained to them. We have a Nursery School meeting in the Church Centre and a Montessori School in our other hall, and we hold a Carol Service and Harvest Service for them.

Keith is an official Visitor at Whipps Cross, and spends two days a week there. The Vicar was Mayor's Chaplain three years ago, and has had a bit of involvement with the Faith Communities Forum. Until very recently he was a member of the Diocesan Synod. He is also Local Area Readers Convenor (LARC) for Waltham Forest and a Convenor for the Theological Reflection Group for this year's deacons in the Barking Episcopal Area.

Unique selling points

The best thing about our Church is the friendliness of the congregation and the welcome given to people, especially newcomers, as they arrive. This is frequently commented upon. The building is in a very good position, on the main road and on several bus routes, and very visible. We are a multi-ethnic congregation, with the black membership especially growing. We are currently modifying our social events in particular to take account of the changing composition of the congregation.

Our most recent development was a Youth Club for younger teenagers, but it is suspended at the moment due to shortage of leadership and we are trying to restart it. We have a thriving Junior Church meeting on Sunday mornings at the same time as the service.

We have tried leafleting every house in part of the Parish, but without any very obvious results. However, Christmas leaflets delivered to every house do seem to have had an effect in bringing visitors into the Christmas services. We put a lot of work into Christian Aid Week, and the amount we collect for that goes up almost every year. The congregation give quite a lot to outside causes, both in this country and elsewhere,

and we have a link with Argentina, contributing to the support of a Christian worker there. We are also hoping to develop links with a Spanish-speaking congregation in Waltham Forest in the near future.

We have some regular Home Groups for study, fellowship and mutual support, and would like to build these up and get more people involved. Once a year we have a Church Weekend away for fellowship and learning together.

Buildings

St John's building (which does not in itself have any architectural merit) was converted into a Church Centre ten years ago, and the worship area is now on the first floor, with the ground floor divided into two halls and some other rooms for the use of the congregation and for hiring out to local community groups. The conversion has been very successful, and the building is used by a number of different groups, with hundreds of children and adults coming into it every week. This gives us a lot of contact with the community, and has perhaps helped some people to come to worship with us, though not too many that one can see.

We also have another hall, about half a mile away, hired by a few groups, particularly a Montessori School.

Our plant is in a reasonably good state of repair. Most recently we had new toilets installed and other improvements made in the second hall, and only about three years ago the Church was re-roofed. The next major job will be the restoring of crumbling stonework around the Church.

Deanery

We are a good venue for meetings, central to the whole deanery.

St Peter-in-the-Forest, Walthamstow



Vicar

Fr Steven Saxby
c/o Peterhouse, 122 Forest Rise,
Walthamstow, E17 3PW.
Tel: 020 8520 3854

E-mail: stevensaxby@btinternet.com

Parish websites: www.church-in-the-forest.co.uk and www.peterhousecentre.co.uk

The Parish

St Peter's parish is a strip on the eastern edge of the Deanery, stretching from Whipps Cross to Highams Park. It contains a fair bit of Epping Forest land but is otherwise largely residential, not withstanding some small business units in Wood Street. It has a population of about 7000 people. 21% are over 60 and 21% under 16. 10% are from ethnic minority communities. In general it is a relatively affluent part of the Borough but with significant pockets of deprivation.

People

In addition to the Vicar, St Peter's has two Readers (Geoff Hammond and Myna Jones) and one Honorary Reader (Harry Goodwin). There are also two non-stipendiary clergy (Canon Mike Gibbs and Revd Emile Jones) each of whom helps out at St Peter's about one Sunday a month.

St Peter's has well developed traditions of lay involvement in the liturgy (readers, intercessors, servers, welcomers, Eucharistic assistants) and in leadership of various areas of church life. In addition to the PCC, there are four teams related to i) preaching and teaching, ii) the social life of the church, iii) the running of Peterhouse, and iv) overseeing worship and children's work.

The Vicar is largely responsible for taking the occasional offices. In 2006 this amounted to 15 funerals, 6 weddings (2 of these in Forest School Chapel) and 5 infant baptisms.

Links with others

St Peter's has good links with other local churches, not least in the Walthamstow Team Ministry, Our Lady and St George (RC) and Shernhall Methodist – all of which have joined together for an annual Taize service in recent years. In addition, there are links with Pentecostal congregations, including Voice of Faith Ministries, Blessed Hope Church, the Walk in Love Foundation and World Improvers International (the last two meeting in Peterhouse).

Through his 30% role as Deanery Development Officer, the Vicar has good links with various faith community congregations and organisations across the Borough, as well as with various civic leaders and voluntary organisations. He has been Secretary and the Local Strategic Partnership representative for the Waltham Forest Faith Communities Forum and still represents it on SafetyNet and the Community Cohesion Task Group. He is the line-manager for the Faith Communities Project Manager, Marion Waruguru, based at the Town Hall.

Various congregational members are active in local voluntary organisations including the Waltham Forest Disabled Club and the Credit Union. The congregation includes senior staff working at Waltham Forest College, Waltham Forest Music Service and various local schools.

The Parish has good links with Thorpe Hall Primary, Whitefields School and Forest School, all of which hold a service in the church at Christmas time. This last Christmas over 900 children visited the church for services. A youth brass band uses the church for weekly practices.

Several groups make regular use of Peterhouse. These include parent and toddlers, the Brownies and Guides, the Woodcraft Folk, the Christian Studies Course, the Workers Educational Association and several sport and exercise groups. Peterhouse is also used widely by the local community and is rented out by the Council, local health services and businesses. A medical practice uses part of Peterhouse but there is little fruitful contact between the surgery and the church community. The church is currently considering how best to use the whole of Peterhouse after the surgery lease expires in 2010.

Congregation members attend Community Council meetings and the Vicar recently chaired the first meeting of the Wood Street Safer Neighbourhoods Forum. The Vicar is a member of Diocesan Synod, Convener of the London Boroughs Faiths Network and a Companion of the Society of St Francis. He is currently studying for an MA in Cultural Heritage Studies at University College London.

We support a parish mission in Southern India, give regularly to various charities and respond generously to emergency charity appeals.

Mission

St Peter's-in-the-Forest is an attractive Italianate church built in 1840 but much re-ordered with the effect of the inside being light and spacious. It is set in a pleasant strip of Epping Forest, slightly apart from the Upper Walthamstow community to which it relates, but also in a prominent position on the Woodford New Road (with over 38,000 vehicles passing within a 24 period). We have new signs aimed at attracting people, are planning for the church porch to open during the week and are working on a trail around the churchyard.

We strive to be a church for the local community and regularly deliver a church newsletter to most homes in the Parish. Our worship strives to meet the needs of long-standing members and be accessible to newcomers. We have developed a monthly All Age Communion. We now hold a yearly service in the Forest for the local dog-walking community and have held services in a local pub.

Music and colourful liturgy, good preaching and teaching, service and mission to those around us are all important features of our common life.

We are dedicated to work with children and delight in a small but committed group of children in the Quest Club (4-11). We have just started a group for 9/10 year olds which they have named SPITFLY (St Peter's-in-the-Forest local youth).

Buildings

The church is in good condition. There is a new accessible external toilet block and internal ramp. There is a churchyard maintenance plan for which the PCC and Council share responsibility. Peterhouse is an excellent, modern community centre built in 1997 and in good condition. Rental income pays for the employment of a part-time Administrator and full-time Caretaker. The Parish also owns a small house and currently part-subsidises the use of the house by one of the NSM clergy and his family.

Deanery

St Peter's is interested in developing the notion of the church as a Small Pilgrim Place and we would welcome support from others in the Deanery for this project. We are also exploring offering services in which translation will be offered for people from new-to-East-London-communities (including Polish, Romanian, Bulgarian, Russian and Afrikaans) and would happily work with others on this. We continue to offer Peterhouse as a resource for the Deanery and we support the work (and expenses) of the Deanery Development Officer.

St Michael and All Angels, Walthamstow

Vicar

Fr Jon Ravensdale, SSC
St Michael's Vicarage, Palmerston Road,
Walthamstow, E17 6PQ.
Tel: 020 8520 6328
E-mail: frjrvensdale@btinternet.com



The Parish

St Michael and All Angels, Walthamstow is an 'Urban Priority Area' parish of the Anglo-catholic tradition, having passed resolutions 'A' and 'B'. Also, and in accordance with the 1993 Act of Synod, St Michael's has petitioned the Bishop of Chelmsford for 'Additional Episcopal Oversight' (more commonly referred to as 'Resolution C'). Further, St Michael's is a 'Forward in Faith' registered parish.

The 'Church Plant' consists of a single church building, parish hall and vicarage, of 1885-1889 (by James Maltby Bignall) and all are Grade II listed, making them an important contribution to the streetscape and townscape. The buildings are sited within a single footprint on the very edge of the Parish's southern and eastern most boundaries. Even so, they are ideally located, being at the centre of Walthamstow's lively and popular shopping centre, also, being on a number of bus and train routes.

The Parish has a recorded population of some 9000 though there is also an exceptionally high unregistered 'transitory' population. In recent years there has been a clearly perceptible influx of migrants and asylum seekers, mostly Eastern European but also including African and Asian elements. The resultant change in the overall demography of the area, coupled with a more obviously distinct ethnicity, has caused some social polarisation and, even, tension. It is feared that this polarisation and tension is likely to further intensify, at least within the foreseeable future.

People

The Vicar is supported by a committed and well motivated laity. As well as two churchwardens (one of whom is a long-standing member of the General Synod, a nationally recognised architectural historian, and sits on three cathedral fabric advisory committees) and 12 elected PCC members, these include teams of Altar Servers, Extraordinary Ministers of the Sacrament (chalice bearers), Lectors (readers at Mass), Sunday-School teachers, Sides persons, Vergers, and various committee personnel.

Within our very broad and well balanced, ethnically, racially and socially represented congregation, St Michael's boasts an uncommonly high level of professionals. These include teachers, nurses (at all levels, both mental and health care), academics, police officers, and others working in the fields of law, banking and finance. The level of 18 to 25 year olds, young couples, and families with small children, has grown significantly within the last few years.

Deanery and beyond

As well as being the parish priest of St Michael's, the Vicar is a Diocesan Representative on the Forward in Faith Committee. He is also the elected Dean for the 'Alternative Chapter'. Beyond the Deanery he is the Vocations Advisor for those opposed to the ordination of women as priests for the Barking Episcopal Area, and is the Regional Vocations Advisor for the Bishop of Richborough.

Whilst striving to meet its 'Family Purse', St Michael's is always quick, and particularly generous, in its response to international disaster relief appeals such as those of Sudan, Niger and the Indonesian Tsunami, to name the more high profile and obvious.

Ecumenical and secular links

St Michael's has established links with the local Roman Catholic Church of St Patrick. Also, a new link has recently been established with Mission Grove Primary School as well as with local community policing officers.

Services & occasional offices

As well as the 10.30am Solemn Mass on Sunday there is a Said Mass on Tuesdays at 9.30am, Wednesdays at 7.30pm (preceded by Exposition and Benediction), Thursdays at 9.30am and Saturdays at 10am (preceded by recitation of the Holy Rosary). Also, the Sacrament of Reconciliation - as well as Spiritual Direction - is offered between the hours of 10.30am and 12.30pm or by appointment on any other day. The daily offices of Morning and Evening Prayer are observed.

It might reasonably be supposed that the parishioners of St Michael's are amongst the healthiest in the country since funerals are uncommonly rare. Conversely, baptisms are increasing as are Nuptial 'Anniversary' Blessings. That said, the last wedding to be celebrated at St Michael's was in 2001 (that being of the Vicar's son).

Buildings

Over the last three years a great deal of work has been carried out on both the Grade II listed church building (amounting to some £120,000) and on the Hall/Parish Centre (being some £75,000 to date). Although the renovation of the hall is not yet complete, negotiations are currently in progress with a large Play Group and Pre-School Nursery for its use. It is envisaged that in addition to the type of community facilities normally offered by such a group, the hall will also be used to provide Drop-in, Coffee Morning, Child Care, and After School facilities in separate areas of the building. However, it is recognised that this will depend on a number of factors, not least, finance and OFSTED approval. The hall will continue to be used for fundraising and social events by the church.

The Social Club (annexed to the hall) is currently used by a local Darts League on Tuesdays, Thursdays and Fridays; a Cribbage Club on Mondays; and a Fishermen's Club on Wednesdays. It is also used by the church after the Sunday Mass.

Mission and mission statement

The 'Mission' of St Michael and All Angels, Walthamstow is embodied and revealed in its Christian life, witnessed in its activities, and enlivened in its worship (as described in the above paragraphs). St Michael's 'Mission Statement' is most simply and essentially articulated in the Mission Statement of Forward in Faith, which is to say;

**St Michael and All Angels, Walthamstow
is a Forward in Faith church
part of the one Holy Catholic and Apostolic Church.**

**We affirm the Faith of the Church
as revealed in Scripture and Tradition.**

**We proclaim our Faith through the Creeds,
the Sacraments and the apostolic ministry
of the bishops and priests of the Universal Church.**

**We seek a guaranteed ecclesial structure
in which we can pass the Faith on
to our children and grandchildren.**

**We have a vision for unity and truth
and we are going
Forward in Faith.**

Team Ministry, Walthamstow



Team Rector

Revd Simon Heathfield
c/o The Welcome Centre, 8 Church End,
Walthamstow, E17 9RJ.
Tel and Fax: 020 8520 1430/4281 (both lines)
E-mail: simonheathfield@surefish.co.uk
Parish website: www.walthamstowchurch.org.uk

The Parish

The Parish of Walthamstow has been a formal Team Ministry in its present form since 1997. However, there has been a formal Christian presence in the area since the foundation of the Parish in the early 12th century. The present four churches in the team have a long history, both of formal partnerships and informal working relationships. The four churches are St Gabriel's, St Luke's, St Mary's and St Stephen's.

Our location

The Parish sits across the central part of Walthamstow. It runs from Forest Road, Bell Corner, via Hoe Street to just beyond the Queens Road junction, and from Wood Street, via Havant Road, Prospect Road, Church Hill and the High Street to Palmerston Road. The four churches serve their own districts within these broad boundaries. The total parish population (2001 census) is 30,500 with about 45% from minority ethnic communities and mixed religious allegiance. The Parish includes the main railway, bus, police and fire stations in Walthamstow, the longest street market in Western Europe, Thorpe Coombe Hospital, three Secondary Schools, nine Infant/Junior/Primary schools and several nursery/pre-school units. The current average weekly attendance in the Parish is 285 (total electoral roll 411). Taken together our congregations would be fairly representative of the ethnicity and social status of the wider parish.

Our identity

Our churches and congregations have differing roots and a range of traditions, within a broadly evangelical spirituality. Seeking to understand God's call on us amidst our diversity and unity we have recently (started Feb 2006) affirmed our common purpose and values. Upon these each church is building its distinctive vision through different collaborative processes. Our Purpose and Values below seek to describe our identity.

Our purpose

We aim to be vibrant members of the Church of England and the worldwide Christian family who help shape tomorrow's Walthamstow. St Gabriel's, St Luke's, St Mary's and St Stephen's are four churches who embrace each other's diversity as we seek the common good together.

As Christ-centred people of hope, we encounter Jesus, engage with him in and through our local community and encourage each other to experience his love.

- we encounter
- attractive daily worship *as publicly and privately we encounter, know and enjoy God in his word and through his Spirit's power*
- we engage
- active prayerful engagement *with local people, communities and environment as we work to proclaim and share God's love which welcomes individuals and changes situations*
- we encourage
- authentic Christian living *as we seek to encourage each other to grow by following Jesus example with integrity*

Our values

In serving God and others we want to be known as Christian communities including all ages who are particularly known as:

Welcoming (everyone)
 Biblically (rooted)
 Generous (hearted)
 Community (minded)
 Mission (focussed)

Our people

We are committed to growing and developing the ministries of all our members or all ages. The Parish and churches have long established traditions of employing a wider range of staff, lay and ordained, according to need and gifting. We value and aim to foster wide lay involvement in public worship and the leadership of different ministries, groups and activities.

Many church members and staff embrace a number of ministries in the wider church in addition to their core role. These currently include: Assistant Area Dean; Consultant in Mission; Supporting Alpha course development; training for deanery/diocesan wide events and beyond; serving on local police liaison board; contributing to diocesan synod; serving on boards at Ministry Division, Grove Books, Waltham Forest YMCA and YFC; serving as school governors at a range of schools (including St Mary's C of E); offering supervision and support to ordinands and others in training and ministry.

The 2006/7 paid staff team comprises:

Role	Name	Base
Team Vicar	Revd Nigel ANSTEY	St Luke's
Administrator (St Gabriel's, Family Centre, St Stephen's)	Maggie BROWN*	St Gabriel's
Curate	Revd Tony CANT	St Mary's
Careforce Worker (2 nd yr)	Helen CLARKE	Parish (St Mary's)
Administrator (St Mary's and Team Rector's Secretary)	Ruth EDWARDS*	St Mary's
Pastoral Worker (from 2006 also Ordinand)	Ola FRANKLIN*	St Stephen's and St Gabriel's
Team Rector	Revd Simon HEATHFIELD	St Mary's/Parish
Team Vicar	Revd Alison KENNEDY	St Stephen's and St Gabriel's
Youth and Children's Development Worker	Currently Vacant	Parish
For 2006/7 we also have a staff intern (20 hrs/week) working with the St Luke's Project		
Staff Intern	Andy CAMPBELL*	St Luke's

Not formally on the staff team, but paid by St Mary's		
Director of Music	Jonathan RATHBONE	St Mary's
The Parish also welcomes the ministry of the following volunteer ministers:		
Evangelist in training	Wendy COXHILL	St Luke's
Reader	Rob DUDDRIDGE	St Mary's
Reader	Helen MILLAR	St Luke's

*=part time

In addition some churches employ cleaners and there are several almost full-time volunteers who look after a significant proportion of our site management tasks. The ministry of each church is guided by a Ministry Leadership Team. However these are in varying states of change, following people changes and our desire to clarify vision, and also vary in levels of completeness/effectiveness.

We try to make a point of encouraging a range of ministries in people, lay and ordained. At present we have several people in the process of discerning a call to ordained ministry, one of whom is now in training and sponsored by the Diocese.

The 'governance' and leadership of the Parish is vested in the PCC, the Team Scheme making provision for full-representation from each church (38 members in all). Most of the regular work is done by the four District Church Councils.

Our ministry

Across the Parish each week a wide range of ministry activities takes place in each church, and on a shared basis. These currently include:

- Cross-parish youth/children's outreach events/clubs (Tuesday, Thursday and Friday, 3 holiday clubs per year at different locations, one-off events organised locally and at a diocesan level, Impulse youth café once a month, Alternative Halloween party, various social events)
- Sunday groups for children (at St Mary's and St Luke's)
- Regular assemblies, teaching and governance at St Mary's C of E Primary
- Welcoming school groups to our buildings for occasional visits and structured programmes connecting with the National Curriculum as developed by our staff (2006 'O Little Town of Walthamstow' reached 12 schools in our area)
- Occasional offices as taken by the ordained staff
- Strong tradition of church members involved in local social action (over recent years this has included: The Branches drop-in, CREST, Forest YMCA, Haven House, Mill House, Worth Unlimited, The Noise etc.).
- Annual events (November memorial service for the bereaved, Christmas and Easter etc)
- Clubs for older people (Good Life Club, Young at Heart, Friendship Club)
- Monthly Saturday breakfast at St Stephen's open to the whole community
- Each church hosts occasional lunches and fund-raising events to build community and belonging
- Midweek Groups (small home group/Bible study groups meeting weekly and looking at material following the theme of each week's sermon)
- Concerts and arts events including: church based choirs and groups (Easter Crucifixion, etc.) and external series with international artists (Music in the Village) and increasingly used as a rehearsal and recording venues (St Mary's and St Gabriel's)
- Occasional Men's Meeting
- Toddler and under 5's groups
- Holy Space (a quiet, quasi-alternative worship gathering on Wednesdays 9pm)
- Midweek services at St Mary's, St Luke's and St Stephen's
- Occasional groups for men or women organised on an ad hoc basis

The Parish has a long history of mission involvement, locally through supporting Youth and children's camps (Scripture Union Longbarn in particular, more recently with Falcon Camps), and globally through a wide range of mission and other agencies. Adults and young people have participated in national Christian festivals such as Spring Harvest, New Wine and Soul Survivor. There has been a history of reciprocal visits of clergy and lay people, particularly with the Deanery's link Diocese of Byumba, Rwanda.

Our buildings

The Parish has a wide range of plant, currently comprising:

<p>St Gabriel’s Church and Family Centre, Havant Rd., The main church and halls dating from c.1880 and the Family centre added in 1993</p> <p>St Gabriel’s Vicarage, Shernhall Street</p>
<p>St Luke’s Church and Halls, Greenleaf Rd., The church building was completed in 1901 and the two halls subsequently added in 1906 on Brookdale Road. The whole site is currently being moved towards sale as a development opportunity, the proceeds being reinvested in High Street mission.</p> <p>St Luke’s Vicarage, Greenleaf Road</p>
<p>St Mary’s Church, Church Hill/Lane Grade II* listed, dating from 1100, with extensive graveyards and significant refurbishment and reordering over the last 20 years.</p> <p>St Mary’s Rectory, Church Hill</p> <p>The Welcome Centre Originally a Church School developed in the 1980’s as a multi-purpose Hall, lounge, catering and shower facilities, and church offices.</p> <p>9 and 10 Church End Two modern, three bedroom, semi-detached properties set alongside the Welcome Centre. Traditionally used as staff accommodation.</p>
<p>St Stephen’s Church, Copeland Road A modern smaller building (1994), with meeting rooms and catering facilities connected to the adjacent Christian Alliance Housing Project for young people both built following the sale of the previous church building.</p> <p>St Stephen’s Vicarage, is currently used by the Diocese for other purposes, but is still technically part of the glebe and may be required by the Parish in the future.</p>
<p>The Parish also owns a three bedroom house in Garner Rd, Walthamstow. This was left to the Diocese for Christian work. It is currently let on a commercial basis, between staff appointments.</p>

Our links

Within the Deanery we seek to work with our neighbouring parishes; this has had various ‘incarnations’ over the years. We have been active members of the Wood Street Group of Churches, and the local Church Link grouping.

Our future

Following an away day in February 2006 the PCC agreed to develop a core understanding of Purpose and Values, upon which each church would build its vision. Until the summer of 2006 the purpose and values were discussed, agreed, preached upon and studied in small groups. We are concerned that ‘vision’ is part of our church ‘DNA’. We hope to have individual church visions discerned by the end of 2006 and work towards aligning them for the whole parish and wider context in the first part of 2007 so that our resources can be prioritised and grown within God’s call on our lives. This continues to be a challenging and difficult process, where we consider what must stop or die away, as well as what might start afresh. We are fully committed to integrating with the Deanery Vision, but recognise our timetable dictates a slightly different form at present.

Although the exact formulation is unknown, some/all of the following may become significant emphasis within the whole:

- Reaching different communities: each of our churches is aware, to varying degrees, of the diversity and social difference beyond our doors, we want to have impact across our communities, not just with those who are like us
- Interfaith relationships
- Responding to social change (growth of Eastern European community, the 'gentrification' of Walthamstow village, problems of social exclusion and growing crime rate, etc.)
- Developing genuinely shared leadership and patterns of contemporary prayer, worship and spirituality
- Helping people grow into active, healthy discipleship
- Growing all our church life, and especially our public ministries, to be inclusive of the social and ethnic mix in our congregations and wider communities
- Co-ordinating our internal and external communication and use of media (printed, internet, signage, presence, etc..) so that our ministry is understood and supported by our members and our mission reaches those we seek to serve
- Growing our mission through partnership with St Mary's C of E Primary, and other local schools
- Looking to the next stage of our governance and foundation (the present Team Scheme was a good vehicle for bringing the Parish together, but increasingly strains as an effective model for our diverse ministries)
- St Luke's Project (currently transitioning to a new Mission Focussed church on Walthamstow High Street, exploring new ways of being church, selling current site and investing in mission)
- Developing policies, structures and all that makes for a good employer
- Children and Young People
- Specialist and new ministries (i.e. St Stephen's and elderly residents, St Gabriel's as potential Arts venue etc.)
- Open Village Project 2007 -2009 (in 2006 St Mary's has been awarded a grant of £25,000 to work in partnership with various local institutions and Walthamstow Village Residents Association to promote local heritage, particularly amongst Minority Ethnic communities and Young people)
- Better use of our buildings and sites as community resources
- 900th anniversary of the formal parish (prob.2008)
- Growing in understanding how our plant and people can be mutually shared at Deanery and other local levels for effective mission

Deanery

We appreciate any support, particularly fellowship in prayer, from any of our sister churches in the Deanery.

Our staff and others have helped other parishes and organisations with consultancy and other ministry. We have an ethos as being a 'sending' church, wanting to share God's blessing with others. At present we feel we could offer the following to the Deanery:

- Children's work, including: holiday clubs, after-school clubs, work with toddlers, assemblies and seasonal activities (e.g. Saints and Superheroes and O Little Town of Walthamstow)
- Arts projects
- Community initiatives
- Setting up "mission-shaped church" projects
- Venues for local away-days
- Working in a team
- Growth through small groups
- Staff and academic supervision
- Vocational discernment and guidance
- Alpha courses
- Leadership development in Christian and non-Christian contexts
- Organisational consultancy and training
- Leadership training and development for youth and children's ministry

St Saviour, Walthamstow

Vicar

Fr David Waller
St Saviour's Vicarage,
210 Markhouse Road,
Walthamstow, E17 8EP.
Tel: 020 8520 2036
E-mail: d.a.waller@btinternet.com



The Parish

The Parish of St Saviour lies on the Western edge of the Deanery. The area is socially mixed, some well off, some bordering on poverty. There are many young couples with children, but there also a significant number of single parent families. There are many old people, as well as a lot of young people and children. There is a significant number of unemployed people, particularly in the north eastern part of the Parish. The church is a Forward in Faith parish under the care of the Bishop of Richborough and has passed Resolutions A, B and C.

People

In addition to the parish priest, St Saviour's is a training parish and has a curate (Revd Simon Hewitt-Horsman), a Reader (Mrs Pat Norwood), and a Pastoral Assistant (Everett Peters). The congregation play a full part in the liturgy and in the prayer life of the church. House communicants are taken the sacrament by a team of several lay Eucharistic Ministers and many of the congregation are involved in reading lessons, serving or administering the chalice. The choir has about twenty members, led by an enthusiastic organist and choirmaster.

Links with others

The school is a major feature of parish life. Fr David is Chair of governors of St Saviour's church school, the clergy take weekly assemblies and the whole school celebrates mass twice each term, as well as holding class masses for Key Stage Two. Members of the congregation are involved in the school as pupils, parents, staff and governors. The links between church and school are stronger than they have been for a long time. There are also links with other schools; Fr David also serves as a governor for Barn Croft School and several of the congregation are teachers, working in a variety of schools.

St Saviour's has strong links with other Anglican Catholic parishes in the area (St Margaret's, St Barnabas' and St Michael's and All Angels). Another congregation, the Church of Christ Apostolic (Household of Faith) also worships at St Saviour's. We are firmly committed to the work of Forward in Faith (the incumbent is a member of the national council and is Diocesan Clerical Chairman) and the priests are members of the Society of the Holy Cross. The incumbent is also a member of General Synod, a Trustee of the Confraternity of the Blessed Sacrament, a member of the Diocesan Board of Education and a member of the Bishop of Richborough's Council. The congregation supply two teams of volunteers for the Night Shelter and other members of the congregation make donations of food.

Mission

All of what we do as a church is considered in the light of mission. At the heart of parish life are the four marks of the church set out in the Acts of the Apostles (apostolic teaching, fellowship, the breaking of bread and prayer).

We place great emphasis on catechesis. Each year the Parish holds a confirmation, for which there are usually twelve to twenty candidates. The faith is taught through sermons and since 2001 we have run a Lent study group, which has been widely welcomed and well attended. This year we ran a course in “Christian Basics” for newcomers to church. Our weekly pew sheet and quarterly Forward in Faith newspaper also contain teaching.

We believe that the Church is a community of faith. We seek to value one another as unique gifts from God. Social events ranging from Sunday Coffee and lunches to day and residential pilgrimages are held throughout the year. We seek to welcome all who come to us and we are constantly being joined by new worshippers, particularly currently including immigrants from Eastern Europe.

The Mass is at the centre of parish life and is at the root of all other parish activity. We celebrate Mass twice each Sunday and on most weekdays. In the mass we offer ourselves through Christ to the Father and are nourished by Christ’s own body and blood.

The church is a place of prayer, which takes place formally in worship and the weekly recitation of the rosary. Visitors often come in for quiet moments of prayer, to light candles and to make confessions.

In recent years reconstituting the school governing body has strengthened the connection between congregation and school, which is a central focus of our mission. We have also renewed our teaching ministry through preaching and study groups. We are collaborating with St Margaret’s, Leytonstone and Youth for Christ on a youth initiative.

In order to aid our mission, we need greater financial security and an ecclesiastical structure to provide for us in the future, in the light of the current debate on women’s episcopacy. We hope that regaining the youth centre and turning it into a source of income will assist this.

Buildings

The church building is Grade II listed and in good condition. However, we also have in our care a hall (let to Rascals Nursery), a youth centre, a curate’s house and (debatably) 208 Markhouse Road. The youth centre and 208 Markhouse Road are currently financial burdens rather than assets, but it is hoped to address this.

Deanery

We feel that it is crucial for the future of the Deanery that respectful relationships between people of different traditions are maintained. The Synod and Chapter of the Deanery will only be effective if they serve and promote these relationships. In terms of our contribution to the Deanery, we are able to offer advice and support for school governors and our experience of welcoming transient migrant workers from Eastern Europe.

St Barnabas with St James the Greater, Walthamstow



Vicar

Fr Anthony Couchman
The Vicarage, St Barnabas Road,
Walthamstow, E17 8JZ.
Tel/fax: 020 8520 5323
E-mail: anthonycouchman@yahoo.co.uk

The Parish

The Parish of St Barnabas and St James the Greater roughly falls within the area bounded by Netley Road to the north, the railway line to the east, Gosport Road and Beaconsfield Road to the west and Lea Bridge Road to the south. It also includes Queen's Road Cemetery. In general, it is a relatively deprived part of the Borough but has become a popular area for young, upwardly mobile professionals, especially those in the areas of healthcare and education. It is a densely populated area, largely of residential housing, local shops and community buildings. It has a large Muslim population, which is served by two mosques, one in Queen's Road and the other in Lea Bridge Road. In addition, the Parish has other places of worship, including a Synagogue, an Evangelical Church, a Seventh Day Adventist Church and a Spiritual Baptist Church.

The congregation of St Barnabas' is a multi-ethnic group mainly composed of the indigenous white population, Afro-Caribbeans who have long settled in the area and a growing number of families from the Philippines. Nearly half of the congregation that regularly attends Sunday services is from the Afro-Caribbean group. The choir members mainly come from the same group also, though the altar servers are predominately from the Philippines.

Church personnel

The Vicar, Fr Anthony Couchman, is supported by Fr Alfonso Camiwet as Honorary Assistant Priest, and Dr Julian Litten. Fr Camiwet was ordained priest in the Episcopal Church of the Philippines and is licensed by the Bishop of Chelmsford and the Archbishop of Canterbury. He maintains contact with many Filipino Episcopalians who have migrated to the UK. Dr Julian Litten is prominent in parish life, and is a lay minister of Holy Communion. He is the longest-serving member of the Diocese on the General Synod, a member of the Diocesan Synod and its Pastoral Committee, of the Fabric Commission of Westminster Abbey and the Fabric Committees of Ely Cathedral and St Edmundsbury Cathedral and is the Principal of the Society of The Faith.

Fr Anthony is also enthusiastically supported by the Church Wardens, the PCC and the youth support group and adult volunteers led by Mrs Charmaine Wiggins and Mr Ken Carter, respectively. Mr Carter is also a Church Warden and a representative on the Deanery Synod and the local branch of the Church Union. The Vicar is also the Furnishings Officer for the Diocese and an Observer at meetings of the Diocesan Advisory

Committee. He is also a member of the Court of Fellows of the Society of the Faith and its official observer at the Council of Catholic Societies.

The church, hall and vicarage

These buildings, the work of the architect William Douglas Carøe, make a unique architectural contribution not only to the Borough but also nationally. All are listed, the church Grade II *, the parish hall and vicarage Grade II. They are described in detail in the *Centenary Guidebook* by Dr JWS Litten, FSA and are the subject of the longest entry of any building in Walthamstow in Pevsner's *Buildings of England. London 4: East*. The church has received substantial financial support from English Heritage and the Borough in its long-term restoration scheme, which is still in progress.

Parish magazine

A monthly Parish Magazine has been issued in an unbroken run since the establishment of the Parish in 1903. This is widely distributed throughout the Parish and to former church members and supporters who live further afield. This publication, which is used as an instrument of mission, is much appreciated by its readers. A complete run of the Parish Magazine can be examined at Vestry House Museum, Walthamstow.

Links with others

St Barnabas' is under the Episcopal Care of the Bishop of Richborough and has good links with other A.B.C. parishes in the Deanery, including Walthamstow St Michael, Walthamstow St Saviour, Leytonstone St Margaret and Leyton Christ Church.

The area benefits from the fact that Fr Anthony has served as parish priest to St Barnabas for thirty years. He is well-known in the community as the parish priest and has good links with other groups in the area, especially with the Neighbourhood Watch Scheme and the Metropolitan Police. The Parish is particularly well-connected to Age Concern and has recently assisted (through its Starlighters Theatre Group) in an education project aimed at raising awareness of bogus callers to the homes of vulnerable people. In addition, the Parish has good links with the local Thomas Gamuel Primary School, whose students regularly visit the church.

The Parish Hall (Foster Hall) has for almost twenty-five years been the home of the Linda Carter-Christy School of Dancing, which teaches both children and adults, while the Stafford Hall is the meeting place of the Walthamstow Amateur Cine/Video Club.

Over the past fifteen years, St Barnabas' has served as the "spiritual home" and regular gathering venue for the Philippine Igorot community in the UK; and they continue to hold a regular Mass – in their local dialects – at the church. They also use the Parish Hall for their meetings, family gatherings, Christmas parties and to entertain visiting Filipino officers and dignitaries from the Church and Government.

Other religious needs/rites – such as house blessings, memorial services, etc. - of the same Igorot community are also provided by the Parish through Fr Couchman and Fr Camiwet, who is an Igorot himself. The Igorots are the dominant indigenous people composed of different tribes living in the Cordillera mountain ranges in the northern part of the Philippines. Most Igorots are within the Episcopal Church in the Philippines, which is part of the wider Anglican Communion. Further information on the Igorots and the Episcopal Church in the Philippines can be obtained from Mrs Jane Bugnosen (Church Warden) by e-mail at jbugnosen@ntlworld.com

Mission statement

The Parish of St Barnabas and St James the Greater will provide and address the spiritual needs of its growing multi-ethnic congregation while openly reaching out to the wider local community. The Parish will achieve this goal by its Worship of God through prayer and the Holy Sacraments and in its service to its parishioners.

St Catherine and St Paul, Leyton

Vicar

Revd Paul Reily
The Vicarage, 2b Fairlop Road,
Leytonstone, E11 1BL.
Tel: 020 8539 6361
E-mail: paul@reily.co.uk



The Parish

The present parish was formed in 1998, merging the former parishes of St Catherine, Leyton and St Paul, Leyton. The two parish churches were sold, and a new building named "The Cornerstone" was erected on Canterbury Road, incorporating the new parish church of St Catherine and St Paul, Leyton.

Worship is predominantly Holy Communion and Morning Prayer, which alternate each week. There is active lay participation within services, with the laity reading lessons, leading intercessions, administering the cup, and preaching. There is interaction and group discussion during the breaking down of the Word.

Feedback received from those outside of the church is that St Catherine and St Paul is a welcoming church actively involved within the community.

People

Paul, the current vicar, was appointed in 2001, and since 2004 has also served as Area Dean of Waltham Forest. His preferred style of ministry is as "one among" and not as "one over" others. He is assisted by Rosy Ashley, who was appointed Assistant Curate in 2005. Rosy is a great innovator, and has begun building up links with Leyton 6th Form College through its Christian Union.

Additionally, the Parish has two licensed Readers: Jackie Reily (the Vicar's wife), who is a trained counsellor and puts aside two days a week specifically for the church; and Liz Bassant, whose strength lies in preaching. There are six licensed Lay Ministers of Communion, including Justin McKenzie who is a Lay Canon of the Diocese, serves on Bishop's Council and Diocesan Synod, and was formerly Lay Chair of the Deanery.

Justin also acts as the volunteer Centre Manager, The Cornerstone employs Cheryl Reid as a part-time Community Worker and Dan Storey as a part-time Worship Leader, who comprise the Staff Team along with Paul, Rosy, Jackie, Justin and John Stacey. Wendy Eackett provides administrative support both to Paul in his role as Area Dean and to the Parish itself. The Community Worker role has been developing contact with and outreach to the community through the Centre.

Links with others

St Catherine and St Paul shares boundaries with six other parishes and has informal links with some of these. Recently, it has joined with the Gateway Church and St Andrew, Leytonstone in running an Alpha Course. It has also shared confirmation preparation classes with the Leyton parishes of All Saints, Emmanuel and St Mary. In the past, Paul has joined with the clergy of these parishes for prayers (although St Catherine and St Paul is not part of the Leyton Group Ministry).

Within the Parish there are three other churches – the Elim Pentecostal Church (which worships in the former St Catherine's), the Gateway Church (a modern independent Pentecostal congregation), and the United Free Church (formed of Baptist and United Reformed Church members). Additionally, the Barclay Christian Centre – run by the London City Mission – is within the parish boundaries. There have been links with Gateway (working together on Alpha and providing a series of local prophecy conferences) and also with the United Free (in holding joint Carol Services). Members from Elim and Barclay have been involved with children's clubs at the Cornerstone.

There is a sizeable Muslim population within the Parish, though the local mosque lies just outside of the Parish. St Catherine and St Paul, however, have good relationships with the moderate leadership at the mosque.

There are strong links with Waltham Forest Youth for Christ: with their offices now located in the building and with John Stacey (its treasurer) being a member of the congregation. Members of the church are also part of the rota for staffing the Waltham Forest Night Shelter.

There are two primary schools within the Parish: Barclay, where new links have been fostered recently, and Gwyn Jones, where there has been a long connection, though the link has been loosened recently by the school. Both of these nevertheless still come into the church occasionally. There is also a growing link with Leyton 6th Form College, which is happy to call on the services of St Catherine and St Paul.

The church has good links with the community through its Mothers' Union, and through the contacts it makes through its community centre. It provides a Contact Centre (where estranged parents and their children can meet on neutral territory), a Centre for Third Party Reporting, a Pre-school and Toddlers' Group, lessons in English as a second language, Junior Citizens (for Year 6 children), a bi-weekly Blind Club, and a Muslim group for those facing domestic violence issues. Additionally, the Cornerstone provides dedicated office space for the Pre-School Learning Alliance.

The building is very much at the heart of the community, full of life, and acts as a catalyst for getting things happening locally. There are plans for the provision of a comfortable coffee bar within the centre, which it is hoped will encourage more of the local population to engage with the building.

St Catherine and St Paul is partnered with a church in Albania, and tithes its gross church income for mission, financially supporting Youth for Christ, CPAS, Tear Fund and the Night Shelter.

Mission

There is a written Vision Statement (see below). The Parish sees its greatest challenge as one of sustainability and growth – managing change and moving forward appropriately.

The combining of the roles of Area Dean and Vicar occasionally results in heightened pressure and competing priorities for Paul, though the Parish is supportive of him in his deanery-wide role and do not feel this has impacted negatively on his parish ministry.

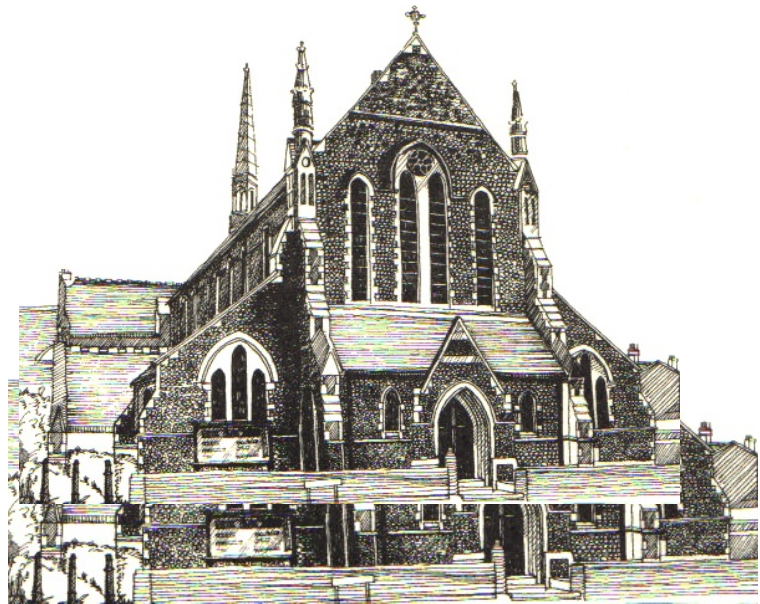
St Catherine and St Paul wishes to be seen as an "Open Door" – a place where people can ask questions, where leadership comes from within, and unafraid of an appropriate sense of vulnerability.

Vision statement

We believe God's vision is for us to become a "missional" community: a centre for Hospitality, Spirituality, Wholeness, Learning and Rest; a community where the presence of God dwells which draws people in and from where we go out to encounter the world.

So what does this mean? In a nutshell, we want to develop the good work of the past and place the emphasis for the coming year on being a place of warm and ready welcome (Hospitality); a place where people are drawn because they know they will meet God (Spirituality); a place where people find health and healing (Wholeness); a place offering direction, education and information (Learning); and a place to 'chill out' (Rest).

St Andrew, Leytonstone



Parish Priest

Fr Duncan Dalais
7 Forest Glade,
Leytonstone, E11 1LU.
Tel: 020 8989 0942
E-mail: duncan.dalais@virgin.net

The Parish

St Andrew's is the smallest parish in the deanery with a population of 3,100. Half the parish is Epping Forest land and the rest consists of terraced housing. The church which was built between 1887 and 1893 in order to meet the growing demand for a large church in the area lies within the Conservation Area of Leytonstone

People

In addition to the vicar, St Andrew's is served once a month by a Reader mostly working in another parish (Diana Kennedy) and has one lay member testing her vocation to the ordained ministry. Lay ministries include people who administer the chalice and a member who is working with the Deanery Children's Development Worker on setting up youth work at St Andrew's. The congregation play an important role in the worship such as reading the lessons, leading the intercessions and running a Sunday school. St. Andrew's has a strong choral tradition continuing down to the present day choir.

The parish priest is also half-time chaplain at Whipps Cross. Up until a few years ago there used to be a team of trained volunteers from the parish who would visit the wards at Whipps Cross but they had to be withdrawn due to data protection and patient confidentiality. However, a small team from the parish do still take Holy Communion into the hospital on a Sunday when requested.

Links with others

St Andrew's is a member of the 'Leytonstone "Group" of churches'. The parish is also working with the St Catherine and St Paul's, Leyton on running an Alpha course at the Cornerstone.

Links with the hospital are strong, not least through the parish priest's work as chaplain. This involves taking part in events and services in the Retreat (formerly the Chapel in the hospital). There are also a number of nurses in the congregation. There is a Hindu Temple in the parish, but there are no personal links. St Andrew's is close to Leytonstone School which uses the hall for examinations. St Andrew's is also located within a Conservation area and there is involvement with the community, especially over planning considerations for building on land behind the church. The Forest Residents Association uses the choir vestry and the hall for meetings.

Several congregation members are involved in community activities. These include: the chair of governors at George Monoux College who is also the chair of the Local Residents Association; a scout leader who is also site manager at a major UK Scouts camp; a PCC member who also runs a crèche three days per week; and a member who runs a toddler group on a Monday.

Unique selling points

St Andrew's is made up of a cross section of people from all walks of life and representing different cultures, backgrounds, talents, ethnicities, and characters. People think differently but blend and work together. It is notable how people who are extremely high-church and those who are evangelical are able to work well together. The worship is traditionally high-church with a degree of solemnity, but there is also a light heartedness and relaxed atmosphere within this formality. This mix seems to meet the needs of the diverse congregation. There is an accommodation of different people's views. It is very important that we give a welcome to people who are and think and believe differently from ourselves. This "unity in diversity" is evident at PCC level where the ability to present different ideas and debate them properly and in a spirit of good humour has been demonstrated. This is a struggle and at times can be painful, but St Andrew's has faced it and worked on it rather than avoided it. In general the community is open to growth and change, seeking to promote renewal and transformation.

In the past, the church and all that took place within it was seen as separate from the hall and community even though it was contained within one building. In recent years St Andrew's has worked at developing the 'openness' of the church in a very practical way. The doors dividing church from the hall are now often open for events in the hall; which has given people the opportunity to venture into the church. The church is no longer seen as something - 'on the other side of the screen'. There is even an idea to get rid of the doors between the church and the hall altogether and replace them with a glass divider so that people can see in and be a part of what is happening within the church space. In general, the church has become more inclusive, one where no one is marginalised or excluded and where people enjoy a sense of welcome.

St Andrew's members would like to continue to develop more in their service to others, not just to the elderly and youth but also the community as a whole. The aspiration is to be a church that is there for the community, perhaps to introduce a coffee bar within the hall space and create a presence that is not too 'Christian' but more a place of retreat. The church community seeks to be a beacon of God's love by actions as much as by words to all people irrespective of their faiths and beliefs.

Buildings

The church is a Grade II listed building built between 1887 and 1893 as a memorial church to William Cotton, a local resident, by his son, Henry a distinguished Lord Justice of Appeal. It was designed by Sir Arthur Blomfield and was re-ordered in the 1970s to create a space which can serve as a separate hall or be opened up to form the full dimensions of the church. It has a fine variety of stained glass windows, many of which are by Margaret Chilton, and an organ renowned for its tonal qualities. However there is need for repair, especially to the guttering and roof. Nevertheless the building is still well used by the community including a karate club, the scouts, a dancing group, another church on a Sunday afternoon, children's parties, the Forest Residents Association and a Preschool. There is a problem with efficient use of the building as there can only be one user in the building at any time.

Deanery

St Andrew's, even though a small parish, is actively involved in the deanery. Recently, a member has helped to facilitate the Deanery Mission away day, another has been on the Standing/Pastoral committee, and we are in the process of hosting a deanery Child Protection Day.

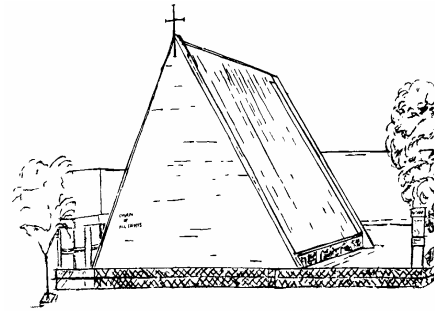
In September we adopted, after extensive discussion within the PCC and consultation with the congregation our Vision Statement '***In the light of God's call, and our situation here, our vision is for St Andrew's to be an open, welcoming and thriving church, serving our diverse community by caring for the spiritual, social and physical wellbeing of all***'

From this Vision Statement the PCC has identified the following three directions we need to action; spiritual growth, mission and stewardship. These themes will be developed over the coming year

All Saints, Leyton

Vicar

Revd Maria Holmden
47 Melbourne Road,
Leyton, E10 7HF.
Tel: 020 8558 8139
E-mail: mholmden@tiscali.co.uk



The Parish

All Saints parish covers an area mainly south and west of the junction of Lea Bridge Road and Hoe Street and is partly in three wards: Lea Bridge, Leyton and Forest. This means that the Parish is almost equally split between two Community Councils. The original church was built in 1863 as a daughter church of St Mary's and became a parish in its own right in 1885. In the mid 1960s the old church and Institute were demolished, with residential flats being built on the site. A new church and hall were built on the site of the old vicarage.

The area is an inner-city, multi-cultural neighbourhood. The Parish includes the Beaumont Estate which was council owned but is now managed by a housing association and is at present undergoing major rebuilding and refurbishment. There are two other sizeable areas of housing association flats: Leyton Green Tower and Market Parade, and Lea Hall Gardens. The majority of the rest of the housing is Victorian terraces, some of which have been converted into flats, with some post-war build in between.

The population is very diverse, around 50% from minority ethnic communities. These are largely from Pakistan, the Caribbean, various parts of Africa and many Eastern European countries, although there are also people from other parts of Asia and South and North America.

People

In addition to the Vicar, All Saints has a Reader-in-training, and a lay person who preaches once a month and is also a qualified Health Preacher. One other lay person preaches on an occasional basis. All Saints has a tradition of all-member ministry and over half the congregation are involved in some kind of ministry within the church. This is achieved through teams of people taking turns on a rota basis in both services and other aspects of church life. We try to 'share the load' and almost all jobs have a number of volunteers who work on a rota basis. Although we only have one churchwarden at present, we do have a team of four deputies who work alongside.

Links with others

All Saints is a member of the Leyton Group Ministry, together with St Mary's and Emmanuel. All Saints has begun to develop links with Trinity Methodist church in Leyton High Road. Church members also participate in Care Leyton, WYFC, and the Christian Kitchen. There are also links with the Faith Believers Christian Centre (an African church who meet in the church hall)

The Vicar was instrumental in setting up the local Neighbourhood Watch scheme which is now run by local residents and she attends the Lawrence Court Community Action Team, and the Lea Bridge Ward Safer Neighbourhoods Panel Meeting. She chairs the management committee of the pre-school which meets in the church hall, is on the COR for WYFC and Vice Chair of the Henry Green Trust Fund.

The Vicar and members of the congregation attend Community Council meetings and are active in the campaign to Save Whipps Cross Hospital.

Mission

A pre-school has met in the hall for the past 30 years (starting as a parent and toddler group, then a play group and for the past 10 years as a pre-school). In January 2006 a Parent and Toddler Group was set up and is a joint venture between the church and the pre-school. The church has welcomed Sure Start activities in the hall and garden in the summer months and has participated in Fun Days in the wider community.

The church is growing, especially with families and our Sunday School has over 40 children and young people ranging in age from 3 years to 19. With the local estate undergoing a large amount of demolition and rebuilding, there is a possibility of new families arriving.

Buildings

All Saints church is a modern building in the shape of a tent, (known locally as 'The Toblerone Church'). It is joined to a spacious hall and four smaller meeting rooms. Although the complex was built in the late 1960s and early 70s, it is in need of major repairs. The hall roof has recently been replaced, but the 'link roof' between the hall and church also needs to be replaced and the church itself has a large glass roof which needs major repair work and a ceiling that needs replacing. In 2005 a group from Community Service redecorated the hall, meeting rooms, stairs and landing, as well as painting all the fences and railings in the gardens.

In 2006 a canopy was built on the side of the hall and a new soft play surface laid to enable pre-school and others to have outdoor play all year round. There are plans to build out on two sides of the hall to improve the facilities for the pre-school and other children's work in the church, to upgrade the toilets, build a new kitchen and office, repair and improve the church and possibly build an upstairs in the hall to house office space. These plans may take some time to implement and will be done in stages. The total cost of such a project will be well over £500,000. Phase Two will be the new 'link roof' and toilets.

Funding

Grants were obtained from Sure Start and London-over-the-Border to pay for a new roof on the church hall and the canopy and soft play surface in the garden. Grants from statutory bodies, trust funds and companies will be sought for future work. The church also recognises that we will need to raise a lot of money from the congregation. A fundraising working group has been created and a very successful Caribbean evening was held in April. This is to be followed by a Christmas Bazaar in November and an African Event next year. As well as donations the church also holds coffee mornings, sometimes for our own finance, sometimes to support organisations at home and abroad.

Unique selling points

All Saints has a reputation as a very welcoming church. We welcome people of all nationalities, and have at least 16 nationalities represented in our congregation. We welcome people of all ages, ability and disability and are looking at ways of making our church even more accessible. We are centred in our community and although many of our neighbours do not come to church many are willing to help in practical and fund-raising ways if the church needs assistance.

Deanery

We see the Deanery as a source of encouragement. Recently we had the Deanery Lay Chair visit our PCC as part of the Review of Leyton Group Ministry. He stayed for the whole meeting and we found it very helpful. Maybe it would be good on occasions for members of PCCs in different parts of the Deanery to visit other PCCs to share/learn about something of what is going on in other churches. All Saints has worked with, and benefited from the work of, the Deanery Children's Development worker Jean Elliott.

Emmanuel, Leyton



Vicar

Revd Canon Ade Ademola
149 Hitcham Road
Leyton, E17 8HL.
Tel: 020 8539 2200

E-mail: orison@ademola.eu

Parish websites: www.emmanuelleyton.org.uk and www.emmanuelleyton.org

The Parish

Emmanuel Parish Church, Leyton is situated at the western end of the Lea Bridge Road in Hitcham Road. The Parish is on the border of the Diocese of London and is a main London artery to and from the city. It is a high mobility area due to the nature of some of the housing. It is a multi-cultural area. It also has a large industrial site, includes part of the Lea Valley and is at the northern tip of the Olympic Site and Thames Gateway development. It is one of the more economically deprived areas of the Borough but is rich in Christian spirituality and charity.

People

In addition to the Vicar, Emmanuel has an ordinand in training (Sheila Fernandes) who assists with preaching and leading services as part of her training. It also has a lay bible-study leader (Clive Sears).

At Emmanuel lay people are heavily engaged in the liturgy and life of the church (as readers, intercessors, servers, welcomers, Eucharistic assistants) and in the wider life of the church (leading the social committee, producing the monthly magazine, nurturing national and overseas links, running Emmanuel Youth Club and much more).

The Vicar is solely responsible for taking the occasional offices.

Links with others

Emmanuel has strong links with neighbouring parishes in Leyton (and beyond). There are also good, informal links with other denominations and currently the Vicar and his team are helping to cover an interregnum at Grange Park United Reformed Church.

No other faith community has a place of worship in the Parish. The prayer is that there will be none as the aim is to win all for Christ. That being said, there are good and supportive relationships with those of other faiths and a willingness to work together in the community.

There is a secondary and a primary school within the Parish and the latter visits the church as part of the curriculum. Emmanuel has links with Waltham Forest Youth for Christ and the Vicar has attended meetings of the Gateway Partnership. Emmanuel Parish Hall is used by three independent congregations and for various community activities, including Gamblers Anonymous, children's dance classes, Emmanuel Youth Club and a Karate group.

Various congregational members are active in the local community, including Neighbourhood Watch. The Vicar and some lay members are part of the Society of Mary and Martha, a fellowship of people praying for churches and the nation.

The Vicar is co-Warden of Ordinands for Waltham Forest and Redbridge, Healing and Deliverance Advisor for the Barking Episcopal Area, a member of the Chelmsford Diocesan Theological Resources Group, Co-Chair of the London Day of Renewal (Anglo-catholic and charismatic renewal group), House of Bishops' Inspector for Theological Colleges, a member of the Archbishops' Council Committee for Ethnic and Minority Anglican Concerns (CEMEAC), a Canon of St Stephen's Cathedral, Ibadan in Nigeria and the Archbishop of Ibadan's Commissary for the United Kingdom.

Emmanuel supports a parish in Madagascar.

Mission

At the centre of Emmanuel's common life is the desire to preach the crucified & risen Christ. We believe people want the truth of the Lord Jesus Christ and we seek to welcome all who seek it. We have set up a pastoral group to ensure that existing members are not neglected as the church grows and develops its outreach. We seek Reconciliation and believe excess baggage must be left at the foot of the cross. As we grow in mission, we are enabling people to identify and use their own skills. Our bible studies lead to practical evangelism, for example we have completed a three year project offering the Jesus Video to each home in the Parish and we spent time last summer in the streets of the Parish praying for every single residence, business and institution.

Buildings

Emmanuel Church was built in 1935 and is in good condition. The church and the hall are Grade II listed, designed by Martin Travers. The hall was refurbished with accessible facilities in 2002 and the congregation have worked hard in recent years to repair and refurbish the church. There is now an ongoing maintenance programme. The church will soon need to be rewired and new chairs are being purchased to replace old, woodworm infested ones. Use of the buildings is referred to above.

Deanery

We offer to the Deanery the experience of a believing, worshipping community where faith is related to action in our lives. We offer and ask for prayers.

St Mary with St Edward and St Luke, Leyton

Vicar

Revd Tim Davis
The Vicarage, 4 Vicarage Road,
Leyton, E10 5EA.
Tel: 020 8539 7882
E-mail: timandjo.davis@ntlworld.com



The Parish

The current make-up of St Mary's as Leyton Parish Church has evolved from the historic individual parish of St Mary along with the addition of St Edward's (now a non-conformist church) and St Luke's (now Greek Orthodox). As a result the parish now covers a population area of 14,000 people. Consequently there is a reasonably eclectic feel to the congregation especially as the area has a wide diversity of ethnic backgrounds, many of which are represented in the congregation.

Geographically the Parish is bordered by a railway in the north-east corner and the western boundary and includes areas such as Brooks Farm (a city farm), much of Leyton High Road, the recent regeneration development at Temple Mills - including the Retail Park - and the new railway depot for the Channel Tunnel Rail Link. Spitalfields Market, Leyton Library and Leyton Orient Football Club are also within the Parish as are several schools (secondary, primary, junior, infant and nursery) as well as the Old Cricket Ground (which is now a Youth Centre), several recreational parks and SCORE (a local sport and leisure facility).

Links with others

St Mary with St Edward and St Luke is a member of the Leyton Group ministry along with All Saints and Emmanuel. The church also enjoys good relations with Trinity Methodist, on the Parish Boundary along Leyton High Road, and the United Reformed Church on Grange Park Road. The incumbent is keen to establish good working relationships with other churches in mission and ministry in a variety of ways in the local area from within and beyond the Anglican context.

The Vicar is embracing the long-standing relationships with local schools and as such has continued to encourage the use of the church building by the schools for educational purposes relating to history as well as Religious Education. Further to this, the Vicar regularly attends the Community Council, takes opportunities to meet with leaders and members of different political groups, as well as different faiths and is a representative on various trusts, patronages and organisations - such as the Robert Ozler Trust and the Leyton branch of the Royal British Legion.

The Parish has good links with uniformed organisations, such as the Brownies, Guides and historically with the Boys Brigade and Girls Brigade through congregation members. Likewise, the bells at St Mary's provide further links into the community and beyond through our Bell Tower Captain. The bells are rung regularly. Several congregational members are involved in various ways within the local community, including those who work in the area at places such as local health services, local government and educational establishments and those who have been around for many years and, as such, are well-known and regarded within the community.

The Parish Hall provides further links with the community at large, including ecumenically, with other non-denominational churches using the facilities as well as secular activities such as karate, the Asian Disability Group, Brownies and a Thursday dancing club.

As a church we support many missionary charities such as Children's Society, London City Mission, Christian Aid, SAMS and others - although our current approach is under review.

Unique selling point and mission

As the historical Parish Church, St Mary's provides the ideal location for civic activities such as the main focus for the Remembrance Day service in Leyton.

The current clearing works in the churchyard provides a visible statement of our mission. We strive for our church to be seen as active and relevant in the local community, offering a variety of worship events. We look to meet the needs of long-standing members and be accessible to newcomers. We are dedicated to work with children.

Jim Wallis' statement that "Faith is always personal but never private" sums up the teaching regarding mission. In other words, we are to be missionary wherever we are. The church sees its role in mission as part of the wider church but with personal responsibility.

Buildings

St Mary's is a Grade II* listed building that provides further opportunities for outreach with local historical societies who visit regularly. The other side of that is the frustration and expense whenever maintenance work is needed. During the mid to late 1990s around £600,000 was spent on the building in response to an arson attack and the need to undertake other essential maintenance work. This included provision of a disabled access toilet facility and some re-roofing. Therefore the church is generally in good condition although there are other outstanding works that are a high priority but funds do not permit them to be undertaken at present.

The Church Hall is another building that allows outreach opportunity (see above) but suffers from a desperate need for redecoration and remodelling, again funds being a real problem. The church also owns a flat in Vicarage Road that has proved a vital source of income but has been a burden to keep maintained.

Services and other activities

The Vicar sees occasional offices as wonderful mission opportunities. Although baptisms and weddings are rare, the Vicar does around 15 funerals a year. Most of these funerals are done at local crematoria but an annual service of Remembrance, Thanksgiving and Hope is held in church to help with the longer-term issues of loss and bereavement

One of the strengths at St Mary's is the work with children. As is so often the case, we struggle for leaders but we have a thriving Sunday school which regularly has 15 members – sometimes as many as 22. We seldom get single figures. Although we currently have no youth groups, this is an area we are hoping to develop, especially as the top-end children outgrow the Sunday school.

Home, afternoon-fellowship and prayer groups meet regularly. Other opportunities involve bell ringing, flower arranging, as well as plenty of scope for being involved in worship through leading prayers, Bible readings, etc.

The present situation and the future

The church is currently in a transitional period, with the Vicar having taken over after a 2 ½ year interregnum. Shortly before that there were 4 clergy, so the sudden change left some people feeling ignored and demoralised although the interregnum had provided opportunity to strengthen them. The new incumbent, whilst taking time to feel his way in to the current situation, is keen to allow people to realise their gifts and potential and use them both in church and secular situations for the glory of God.

Deanery

St Mary with St Edward and St Luke is committed to working with the Deanery.

Christ Church, Leyton



Vicar

Revd Dr Mark Burkill
Christ Church Vicarage, 52 Elm Road,
Leytonstone, E11 4DW.
Tel: 020 8539 4980
E-mail: m.burkill@ntlworld.com
Parish website: www.christchurchleyton.org.uk

The Parish

The Parish is situated in Leyton and Leytonstone. In recent years there have been significant changes to the local population, characterised by a significant influx of immigrants from Eastern Europe.

People

In addition to the incumbent, the Parish employs a full-time youth worker (Richard Burbidge) and a part-time women's pastoral worker (Marion Knowles). A qualified counsellor (Angela Forbes) also offers sessions on a voluntary basis to the church.

Christ Church has a strong sense of "whole-member ministry" and the congregation are involved in preaching and leading services. The church has planted Grace Church, a second congregation who meet in Wanstead and which is led by the former curate of the church, Revd David Gibbs. The women's pastoral worker runs Bible Study groups and ministers through contacts from the parents and toddlers.

The Vicar is responsible for the occasional offices, which average 8 baptisms, 1 wedding and 12-15 funerals. Baptism preparation is taken very seriously and involves the family in a course of preparation, such as *Christianity Explained*.

Links with others

In addition to Grace Church in Wanstead, Christ Church have good links with St Helen's Bishopsgate (e.g. by encouraging congregation working in London to attend midweek services). Locally, the Vicar occasionally presides at the 8am service at St John's, Leytonstone, and takes other services in the Deanery, and there have been links with St Paul's, Stratford. Members of the congregation work with The London City Mission at the Leytonstone Christian Centre in running a Saturday club for children.

The Vicar has links with the wider evangelical church as a member of the Reform Council and the Church Society Trust and is Chair of the Latimer Trust. He has recently joined the police ward panel. The churchwarden is a Friend of Oakhill and Oakhill students are taken on placement. The Youth Worker is a member of the board of Capital Youthworks.

Links with schools are maintained through visits from the Youth Worker and through several members of the congregation being local teachers.

Overseas links are strong through the missionary organisation Crosslinks (a member of the congregation is the accountant) and Latin Link (a churchwarden is the area rep). Links with Romania are also important as several members of the congregation are Romanian and the Parish has a link with West Kenya.

Staff occasionally visit local mosques for open days. The church seeks to be active in dialogue with local Muslims through door-to-door visiting.

Mission

At the centre of the ministry of Christ Church is an emphasis on explaining what the Bible has to say to us today. We believe that by teaching from Scriptures, God will gather a people who follow Jesus Christ as their Lord and Saviour, and who live in a way that pleases Him. All the activities at Christ Church are designed to help young and old to live by word and deed in a way which fits with our claim to be followers of Jesus Christ. The Christ Church family hopes to be a place where everyone can both give and receive help and encouragement.

Work with children and young people is important and the Sunday school has four age groups. The young people meet regularly during the week for Bible study and social activities. All services aim to be family-friendly and yet not exclusive to single people and married couples, of whom there are a growing number in their twenties. Christ Church takes very seriously her mission to the local community. The congregation regularly engage local people in door-to-door visiting, especially close to major festivals.

The church has grown in recent years through the six Bible study groups (which involve over half of the congregations), regularly prayer meetings and the men's meetings. In order to accommodate this growth, the decision was taken to hold two, identical morning services.

Buildings

Despite some minor concerns about the church boundary wall, the church is in good condition and was re-ordered in 1981 to section off areas of the church to be used separately (this is important as there is no church hall).

Future developments

In terms of mission, over the next five years Christ Church would like to develop: more contact with the local Muslim population, TEFL teaching, after-school clubs, music workshops for children, work with elderly people and links with the housing developments in Stratford. The church would also like to develop pastoral care and the Sunday evening service. Amongst the challenges we face are our relationship with the wider Church of England and learning how to be effective in reaching an unchurched and diverse community made up of many different cultural groups.

Deanery

We feel that we can offer expertise in: work with children and young people, door-to-door visiting, discipling, church planting, stewardship and Biblical teaching.

We would welcome support from other churches in the Deanery in: developing links with other faith groups, developing TEFL classes and after-school clubs and work with elderly people. We would also like to work together with others effectively to keep each other informed about the Stratford development and to make the most of the outreach opportunities at the Olympics.

St John the Baptist Leytonstone



Vicar

Revd Raymond Draper
44 Hartley Road,
Leytonstone, E11 3BL
Tel: 020 8257 2792
Parish website: www.stjohns-leytonstone.org.uk

The Parish

The Parish is a section of north Leytonstone, both sides of Leytonstone High Road from the Midland Railway to the Green Man interchange. It includes a railway station, a tube station, a bus station, a business community, three schools, five churches, a mosque and a residential community. According to the 2001 Census it has a population of 6000 people, but there has been considerable building of flats and houses since then. It is one of six Anglican parishes in Leytonstone. According to the 2001 Census 18% of the people in the Parish are under 16, 13% are of retirement age, 50% are Christian, 30% are from other religions (of whom the largest group are Muslims with 24%) and 20% have no religious affiliation. According to data available to the Diocese of Chelmsford on the wealth of each parish, those who live in St John's Parish are relatively affluent, but there are some areas of deprivation. However in 2005, when there were 131 people on St John's Electoral Roll, 69% of church members lived outside the Ecclesiastical Parish.

Mission

The mission opportunities of the Town Centre site of St John's are considerable. In 2001 the Parochial Church Council launched a ten-year restoration programme. This comprehensive programme includes:

- The strengthening of a community of faith where people of all ages may discover and grow in the mercy of God, Father, Son and Holy Spirit
- A programme of community engagement to strengthen the community in which God has placed us
- The development of an Arts Ministry
- The restoration of the Church, the Churchyard and the Church Hall

People

This community of faith has a vicar, a part-time curate, a chaplain with the deaf community, two Readers, two churchwardens, two deputy-wardens, a Director of Music and an organist. Its members lead the Sparklers Group, the Sunday School, the Youth Fellowship, the Junior Choir, the Children's Percussion Group, St John's Dance Group, the Bell ringers, the Choir, the Home groups, the Mother's Union, the Women's Fellowship and the Men's Fellowship. Confirmation groups for adults and young people are held annually. Teams clean and care for the Church, the Church Hall and the Churchyard. Lay involvement in public worship includes Servers, Flower Arrangers, Choir members, Readers, Intercessors, Churchwardens and Sidespeople. Seven people are authorized to share Holy Communion with those who are housebound. There is a wide range of worship from the Book of Common Prayer and Common Worship to Family services and Festival services. The Parochial Church Council meets ten times a year and has established five sub-committees to take forward our shared mission in this community. The Vicar leads a team of people who

care for people at baptisms, weddings and funerals. In 2006 there were 15 baptisms, 6 weddings, 2 betrothal ceremonies and 13 funerals.

Links with others

As part of our engagement with this community, St John's has helped to establish Churches Together in Cann Hall, Harrow Green and Leytonstone. Since 2001 we have begun to develop links with Leytonstone Mosque. We have developed our links with Davies Lane Primary School and George Tomlinson School. For many years church members have sustained a well-supported Coffee Morning in the Church Hall on Fridays and Saturdays. We helped local parents to establish a Parent and Toddler Group in the Church Hall in 2003. In 2004 we helped to establish the Leytonstone Business Forum. In 2005 we helped to establish the Leyton and Leytonstone Historical Society. From 2003 to 2006, with the help of the police and other agencies, we helped to reduce the intimidation of people in the town centre caused by substance abuse. We have strongly supported the annual Car Free Festival. We have established an Outings Club.

Experiences to share

In developing an Arts Ministry, we have come to play a major role in the annual Leytonstone Festival and have encouraged other churches to share in this event. We have established an annual programme of lunchtime and evening concerts. We have established an annual Choirs' Festival or 'Sangerstevne.'

In the first five years of our restoration programme we have, by God's grace, and with the help of many, built a new church ramp, restored the south vestry with a new toilet, refurbished kitchen and new roof, established a new Churchyard Trail, and rewired the Church Hall, installed new boilers there with a new cooker, a new toilet for people who are disabled and new light-weight tables.

This fourfold programme is beginning to bear fruit. Community life is beginning to flourish again and church membership is increasing. For all of this, we give thanks to God.

Deanery

We have hosted Deanery Synods, an Archdeacon's Visitation and an Ordination.

The Vicar organises an annual learning and support event for all children's work leaders in the Deanery. He has also offered support to the Deanery clergy on working with the local press and with resources for the bi-centenary of the abolition of the Slave Trade.

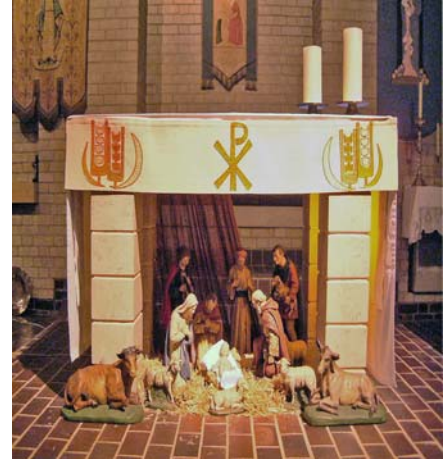
At St John's, Ruth White runs a monthly service in British Sign Language with the deaf community. She also provides signing during some other services and is available to give workshops on deaf awareness at other churches in the Deanery.

Phillipe Driscoll and Nigel Sharp, Readers at St. John's, also help to organise and lead the *Course in Christian Studies* which has meetings in this deanery.

Holy Trinity and St Augustine of Hippo, Harrow Green

Vicar

Fr Ian Harker,
Holy Trinity Vicarage,
4 Holloway Road,
Leytonstone, E11 4LD.
Tel: 020 8539 6067.
E-mail: harkatvic@aol.com
Parish website: www.trinityleytonstone.org



The Parish

The church is in an area recently renovated with social housing, though the Parish also includes two tower blocks and streets of Edwardian terraced housing, many in multiple occupation. The 2004 Index of Multiple Deprivation showed Harrow Green as the most deprived parish in the Deanery. In a Metropolitan Police survey in summer 2006 emergency calls to the police from the local area were four times the next highest figures for the ward.

Experiences we have to offer

- the traditions and ceremonies of an open multi-racial Anglo-Catholic Church, set in an urban estate area, committed to Biblical exposition;
- taking seriously shared ministry, where the Bishop has authorized the whole congregation as ministers under the Ministry as Partnership scheme. We produce a Prayer Leaflet that covers all our members;
- an excellent Sunday Junior Church, with special Advent and Lent open programmes, using the latest from the internet. Occasionally the children share in taking the service;
- partnership work with other organisations for social justice in a neighbourhood facing the usual challenges of urban London – we focus especially on the needs of local young people, and the approach of the Olympic Games;
- close ecumenical work: joint mission with the Wesleyan Christian Centre, Lourdes pilgrimage with our Roman Catholic congregation, regular Sunday evenings with our Methodist and Baptist friends.

People

Our shared ministry commitment is very important to the church's understanding of itself. There are ten Eucharistic ministers, a team of twenty servers, ten leaders of intercessions and a number of people who read the Lessons. Six leaders/teachers are involved with the Junior Church and youth work. Graham Gould has the Bishop's authorisation as a theological teacher. We have a music group, a dance group, and lay people lead preparation for baptism and first communion. Task groups take forward initiatives and recommend decisions. The PCC retains overall policy and financial oversight, but decision-making is consensual.

Baptisms and weddings have increased slightly in recent years, funerals – virtually nil. The focus of worship is the Sunday Sung Communion, and we also have ecumenical Sunday evening services, occasional Evensong with Benediction, Gospel concerts, and Stations of the Cross. The Daily Office is said morning and evening, and the Angelus is rung. We have the full Holy Week ceremonies.

Partnerships

A range of community organisations use our hall every evening. On Tuesday mornings the hall is open for coffee to forge links with local people including those with no other connection with the church. The Community Action Team has been using the hall for youth programmes (daily in the summer and at Christmas time). In addition, the facilities are used for training events by the Barking Programme. Two to three study days per year (over the last few years) have been held at Holy Trinity, on biblical themes or with a social /mission / community focus (including for children). Our church archivist has produced exhibitions and two booklets on the history of the church and the area.

Within the wider community, the church has helped start a Community Safety Network. A youth and community worker worked for the church for six years (partly with Church Urban Fund grants), and we intend to appoint someone new in the future. Congregation members are involved with a variety of community organisations, including the Community Based Housing Association, the New Horizon Women's Centre for Afro-Caribbean cultural activities, the Leytonstone Festival Committee, the Leyton and Leytonstone Historical Society, CREST, and the Police Safe Neighbourhood Team Panel. There are two primary schools in the Parish; both regularly visit the church building; one school has two church members on the governing body. In addition, some congregation members have links with Stonelea and Thornbury mental health units, MENCAP, and a mental health strategy group.

Within the wider church, the church is actively involved in the Cann Hall, Harrow Green and Leytonstone Group of Churches, and shares a monthly evening service with Cann Hall Methodist and Cann Hall Baptist churches. A Roman Catholic congregation from St Francis of Assisi in Stratford holds a weekly Sunday mass at the church and the hall is used by St Anthony's Baptist Church of Spiritual Metaphysics. The Vicar meets with neighbouring Anglican clergy in Leytonstone from time to time. The Vicar is a member of the Barking Episcopal Area Regeneration Group, a Friend of the Lesbian and Gay Christian Movement, and has strong links with the Jewish and Hebrew Studies Department at University College London. Jeanette Hall is a Course in Christian Studies tutor and Graham Gould has wider links with theological education in the Church of England as an examiner for the Oxford BTh degree and is editor of the *Journal of Theological Studies*.

It is clear that Holy Trinity is very conscious of its involvement in the local community, on the estate on which it is located, and the wider parish. The church seeks to engage in rigorous theology within its urban context. The church is fully aware of the challenge that the Olympics and Stratford City development pose. We are always looking to develop further community work, concerts, social events, study days, and promoting itself as a place of urban theology. It is working towards fostering vocations from within the congregation.

The practice of prayer and serious engagement with the Bible and theology sustain the church in its mission – after all one of our dedications is to St Augustine of Hippo.

Changing our hall and grounds

The church and the hall, built in 1974, form an integrated building. Work to develop the grounds and hall is about to begin: this is to make the building more attractive, to enable our grounds to be used by community groups, and to develop new initiatives. The improvements are estimated to cost £400,000 of which £100,000 has been raised for the first part of the project.

Deanery

We welcome any network, joint study, prayer and action which would 'help us to work together for that day when your kingdom comes and justice and mercy will be seen in all the earth' (Eucharist Prayer E).

St Margaret with St Columba, Leytonstone

Vicar

Fr Robert Page, CMP
St Margaret's Vicarage, 15 Woodhouse Road,
Leytonstone, E11 3NG.
Tel: 020 8519 0813
E-mail: rob@stmandstc.fsnet.co.uk

Background and worship

The Parish of St Margaret, Leytonstone was established in 1893 and from the outset has been strongly associated with the work and witness of the Anglo-Catholic Revival – a tradition that has been steadfastly maintained. The Parish is committed to the principles of Forward in Faith and has passed Resolutions A and B under the Ordination of Women (Priests) Measure; the Parish has also petitioned for Extended Episcopal Care which is at the present time provided by the Bishop of Richborough.

On Sunday Mass is celebrated at 8:00am and 11:00am. Mass is celebrated daily during the week, the times being:

- Monday - 7.30pm (Eucharistic liturgy)
- Tuesday - 7.15pm
- Wednesday - 9:30am
- Thursday - 7:30am
- Friday - 8pm
- Saturday - 12noon

Also, the Offices (8am Reading & Morning Prayer, 5.30pm Evening Prayer) are said daily. Confessions are heard on Saturday evenings. There are regular Masses of Our Lady of Walsingham and a monthly Healing Mass. Additionally there are regular meetings for Exposition of the Blessed Sacrament, the Rosary, etc. The full Rites of Holy Week are kept. On Holy Days of Obligation there are always at least two masses. The lay people play a full part in the liturgy as readers, intercessors, extraordinary ministers of the Eucharist (who also take the Blessed Sacrament to the sick and housebound), musicians and servers (men and boys). Pilgrimage plays an important role in the life of the Parish, to places such as Walsingham, Fatima and the Holy Land.

The pastoral opportunities of baptisms, weddings and funerals are regarded with the utmost seriousness. However, and oddly, hardly any funerals (apart from members of the congregation) seem to take place from St Margaret's. Either the local population is immortal, the Funeral Directors are not working the system properly or clergy from other places are conducting funerals from this Parish. There is strong anecdotal evidence that the last is the case. This is a real pastoral issue that we need to address soon.

The Parish

The population of the Parish is around 12,000 and is very mixed covering a wide ethnic and age range. There is a good deal of council and rented accommodation. Also, there are large numbers of refugees, asylum seekers, migrant workers and unemployed people. There are major issues in the local community focused on alcohol and drug abuse; and there is also a small but significant problem with prostitution. The nature of the Parish is well represented in the congregation most people living locally but with some travelling quite a long distance to attend St Margaret's.

Buildings

The church building (recently Grade II listed) is situated in Woodhouse Road, Leytonstone and although it is a very imposing plant and has the feel of a typical East End back-street Anglo-Catholic Church there are major problems and it appears that almost £500,000 will be needed to maintain the present structure. Next to the church is the Parish Institute containing meeting rooms (which are extensively used by both the congregation and the wider community) and the Parish Club – a licensed Bar open most nights of the week and on a Sunday after the Parish Mass.

Youth work, schools and other ministry links

A Sunday School and a Youth Group have been formed and these are doing well and growing. Recently links have been made with Waltham Forest Youth for Christ and we are planning to start, in partnership with St Saviour's, Walthamstow, a "youth Café". A large group of boys and men act as servers at the parish mass and all solemn liturgies and this has formed the basis of a very lively "boys club".

There are also four local schools - Cann Hall Primary, Davis Lane Primary, Jenny Hammond Primary and Tom Hood Comprehensive - which although not church schools are both very welcoming and have good links with and involvement in the life of the church.

As a parish we also run a Bingo Club and a Lunch Club for the elderly and isolated. Until recently we hosted and worked in partnership with a French-speaking, African Outreach Project but due to funding problems they have had to downscale and move out of our halls.

The present situation and the future

The present incumbent moved to the Parish some four and a half years ago. Since his arrival we have formed a definite plan to secure the future of the church building. The church has already had some work done on it; it has been cleaned and "sorted out". Also, our Sunday attendance has risen to between 75 and 95 at the Parish Mass (From a low of 35 to 40).

The congregation is becoming more and more international (32 nationalities at the last count) with the majority being Afro-Caribbean and this is reflected in the style of worship. While we remain firmly in the Catholic Tradition we are seeking renewal, inspired by such events as the Caister Conferences and the Fan the Flame Missions.

Links & Networks

As a parish congregation we with have links with the following organisations and groups:

- Other churches (both Anglican and non Anglican) in Leytonstone
- The other Forward in Faith Parishes in the Deanery and beyond (in both Chelmsford and Diocese of London)
- National and International Forward in Faith (and to some extent Reform)
- The Company of Mission Priests (CMP)
- The Society of the Holy Cross (SSC)
- The Confraternity of the Blessed Sacrament
- The Society of Our Lady of Walsingham
- The Ecumenical Society of Our Lady of Fatima
- The Guild of the Servants of the Sanctuary
- The Society of Saint Vincent de Paul (Millennium Project)
- The Leyton and Leytonstone Historical Society
- The Leytonstone Festival
- Plaxton Court Warden Controlled Accommodation & St Catherine's Stage 2/3 Home
- Touch Sky Care-in-the-Community Hostel

Deanery Away-Day

Shape of the day

The Deanery Away-Day took place in September 2006 at Mulberry House, near Ongar.

The first part of the day, following prayers, offered opportunities to explore the past, present and future role of the church both individually, through personal reflection, in pairs and small groups.

This work was underpinned by a thought-provoking stimulus presentation by Revd Jude Bullock, Vicar of St Anne's Chingford, on the theme of "Dreaming Dreams, Seeing Visions" which explored the need to be open to change and more responsive to society. Jude pointed out that those marginalised in society were rapidly becoming the majority. There was a whole generation untouched by religion and disengaged in the systems of government and civil society. In the context of this, the internal challenges of the church were meaningless: "The church internally divided in a world that just doesn't care," he commented.

Developing a vision at parish level that failed to connect with the wider vision of the Deanery and the church was like every branch of Tesco developing its own mission and strategy. The Church of England had a shared brand and ideology to which every church had to feel it was contributing. Too often, however, parishes were like fortresses defending the barricades from the outside world while the numbers inside were ever diminishing. "Is the church a noun or a verb? A thing or an activity? A place or a process?" asked Jude. He concluded that there was little point in the church unless it was addressing the marginalised majority.

Participants worked in groups to produce pictorial shields creatively capturing their thinking on the church of the past, present and future. This work was followed by a plenary discussion of arising issues. Discussion points ranged over issues of identity, the role of women and ethnic minorities, the importance of the churches 'interface' with the community, and the need to revive Christian mission as something the church is not something it does.

The afternoon session lifted off with parishes and teams sharing progress on their parish visions, with each bringing an object to reflect a central aspect of their vision. The final session was a consensus workshop focused on a central question "How will we contribute to the future development of the wider church?" Participants worked in groups to respond to the question and their responses were shaped into a set of major themes by the whole group, via a process of consensus-building.

The consensus represents agreement among the away-day group on this day, and is not intended to imply a consensus within the whole deanery. It is nevertheless a consensus that has to be respected and may prove useful to the development of the Deanery Vision and strategy.

The themes were:

How will we contribute to the future development of the wider church?

- By having creative boundaries for ministry and mission
- By embracing the cost of the process
- By learning and sharing together
- By embracing social justice
- By involving children and young people
- By accepting Christian diversity
- By being inclusive
- By wholehearted stewardship
- And by, in everything, by being faithful and being confident

Significance of the outcomes

Fostering cross-deanery sharing, learning and partnerships seem to be priorities. But at the same time there is a recognition that the Deanery needs to support and enable parishes, their communities, lay people and clergy to grow and develop where they are.

These outcomes echo the themes suggested by the Diocese to underpin the visioning process. The significance of the thinking emerging from Waltham Forest Deanery is that it is moving a step beyond the idea of mapping resources for mission in individual parishes, as the diocese has requested, to exploring how those resources are collectively build and deployed as part of a common purpose for the future.

While the way through which this can happen is yet to be formulated, the Deanery Away-Day indicated that the *will* is there to work together, as the Diocese suggests, as “a learning people”.

Helen Gheorghiu Gould
Deanery Away-Day Facilitator

Reflections by the Deanery Children's Work Development Worker

'We will not hide these truths from our children. We will tell the next generation ... So each generation should set its hope anew on God, not forgetting His glorious miracles and obeying His commands.' Psalm 78: 4, 7

The good news is that every church in our deanery sees children as an integral part of its congregation; everyone recognises that the church family needs to be an intergenerational family of all ages, worshipping, journeying and growing in faith together, learning from each other and sharing together what God is doing in their lives. Children bring freshness, openness, vitality, questioning minds, enthusiasm, spontaneity and a sense of fun. Jesus himself experienced childhood, grew up in a caring, believing home and valued being taken seriously by the priests at the temple in Jerusalem. Jesus himself welcomed children for who they were and not what they would become. Jesus himself urged adults to 'become like children.'

Some of our churches have just a few children as part of their Sunday congregations. Several churches are encouraged because numbers of children and families have risen in the past few months. A few churches have sizable numbers of children of all ages on Sunday mornings, a few years ago. Penny Frank wrote a book called, 'Every Child, a chance to choose.' (CPAS/SU) Important though what happens on a Sunday morning is, wonderful though it is when a new family or new children arrive, vital though it is that the children who are there on a Sunday are welcomed, nurtured and encouraged in their faith and that those who work with them are also valued, encouraged, nurtured and trained ~ it is also vital that we grasp what has been true for a long time: the majority of children and families in our communities are not going to appear in church on a Sunday morning, Our churches need to give 'every child a chance to choose' by offering opportunities other than Sunday mornings.

George Lings (Church Army) once said, 'The children of post-Christian parents may be pre-Christian ... They will not have been to church activities of any kind.' We have an amazing opportunity to share God's love, grace and good news. It won't always be easy. Sometimes it will be frustrating and exhausting and even heart-breaking. Sometimes it will be exciting and fun, it will always make a difference. As well as the characteristics listed earlier, many children will also bring the brokenness, disappointment, anger and hurt that life has already thrown at them. Our churches need to give 'every child a chance to choose' the friendship, healing, love and new start that Christ offers. It's good to see creative and imaginative thinking as churches embark on new initiatives. There are opportunities for many, many more. In certain parts of our deanery it has struck me just how many groups of children are out on the streets in the early evening. Some children genuinely need a safe, welcoming space in which they can play, relax and spend time with their peers and with adults who are there for them.

The extended school day offers opportunities for churches to set up after-school clubs or breakfast clubs with a Christian ethos and content. The religious education curriculum presents opportunities for schools and local churches to work together imaginatively. The churches with church schools in their parishes have strong links with these, and other churches already have positive links with local schools which could be expanded. Good links with schools can also be springboards for inviting children to holiday clubs, midweek clubs and Saturday workshops. Despite the growing number of children's centres the opportunities for our churches to do exciting work with under 5s and their families are there, and there are some thriving groups and midweek times of worship for this age-group which are a joy to see.

There will be times when it is good for the whole deanery to come together for a children's or all-age event. It's important for children to see that they're part of a much wider Christian family and hopefully all ages can be refreshed and encouraged by working together and getting to know and understand one another better.

Small is beautiful too, and children's house groups may be the way forward for some churches. In these groups, children can ask their questions, grow in their faith and support one another in prayer. For some churches in our deanery, small groups meeting together for communion preparation or confirmation preparation have been really beneficial. Our churches need to give 'every child a chance to choose' by offering groups where children feel secure enough to ask their questions and move on in their understanding of what it is to be a Christian.

All of this needs to be underpinned by prayer and that is why the Mustard Seed prayer group (open to all who want to come) has been formed. We know that individuals and churches are already praying, but sometimes it's good and significant to come together before God and cry out silently or aloud for this generation ~ that our churches will give 'every child a chance to choose' God's kingdom.

Jesus said, 'Let the children come to me.' Luke 18: 16

Together, let's go on finding myriad ways of doing that with all our hearts.

Jean Elliott
Deanery Children's Work Development Worker

Towards a Deanery Strategy?

What does it mean to be a deanery? Of course, the Deanery exists at the level of the synod and the chapter, where some of the business related to the legal framework of the Church of England takes place. But what of the Deanery as a unit for mission? Does it mean anything for us to have a corporate identity as the Church of England here in this London Borough?

Is the sum of the 20 parishes somehow greater than its parts? I would like to believe so. Although I have reservations about the prospect of any meaningful “Deanery Vision”, the process the Diocese asked deaneries to embark upon seemed, at least to me, to provide a framework for our deanery to edge its way towards a slightly more strategic way of being the Anglican church in Waltham Forest.

The process had to be bottom-up; the life of each congregation, each church gathering together as the Body of Christ, remains the primary unit of our mission to the neighbourhoods of this deanery. The parish profiles in this document testify to the depth and variety of that mission: thanks be to God! What follows, by way of me thinking out loud as the Deanery Development Officer, are some tentative suggestions towards the development of a Deanery Strategy.

Should the Deanery Synod endorse the Deanery Vision document, no acceptance of the proposals below is to be inferred. However, these thoughts are offered, flowing out of a careful consideration of each of the profiles, in the hope that they may help us to make a few small steps, steps which would nevertheless make some difference to the desire of all our parishes to be salt and light within our communities.

Greater sharing of resources across the parishes

One of the most easily identifiable features of the parish profiles is that some parishes have asked for help with some areas of mission and ministry and other parishes have offered to help in precisely those areas. For example, some have expressed a desire to develop youth work and others have offered to share their expertise in developing youth work. Let’s hope that these parishes will not be shy, after having read the profiles, to give help where it would be gratefully received and to ask for help where it would be gladly offered.

As well as parish to parish contact, it would be good to see more pro-active sharing of expertise by clergy and others through the synod and chapter. One parish priest’s efforts are notable in providing resources for others in the Deanery on issues such as engaging with the press and marking the bi-centenary of the abolition of the Slave Trade. How can we encourage others to emulate such excellent practice for the good of the whole deanery?

It would seem for sure that issues identified in the profiles should form part of the agenda for our common learning in synod and chapter over the next couple of years, not least our engagement with local Muslims and sharing experiences of fresh expressions of church.

Another issue identified by several parishes is that of relating to new-to-East-London-communities, particularly from Eastern Europe. How about a deanery seminar on this? It would be good to learn more of how the Igorot community has become intrinsic to the life of St Barnabas, Walthamstow and of how other parishes are welcoming Poles, Romanians, Russians, West Africans and others.

Greater use of existing deanery-wide resources

I think it's fantastic that a number of parishes have mentioned how much they are already benefiting from the help of the Deanery Children's Work Development Worker. Others could no doubt benefit from this help and from participation in the events Jean is organising: the *Advent Angel Adventure* was a real treat!

Quite a number of parishes expressed anxiety about finance and aspirations for attracting funds for building and community initiatives. Some help is already available on these issues from the Diocese and, indeed, from the Deanery Development Officer. Those seeking help with youth initiatives may wish to call upon the Barking Area Youth Advisor. However, it may be that for each of these areas, it would be worth the Deanery considering engaging some extra resources, much in the way it has done to secure funds for the Children's Work Development post.

Working together on issues of common interest

There is already much contact between different parishes and with other churches and organisations. However, it would seem that some areas are under-developed at the deanery level. For example, many of our parishes have halls and centres which are used extensively by the wider community. Would a collective social enterprise for all or some of our parishes help to manage and develop this aspect of parish life more effectively and profitably? Also, we have several examples of built heritage which are of considerable cultural interest to many outside of the churches. Would it be good to establish a working party around how we promote this heritage and help visitors to engage with it?

Clearly there are some parishes with issues relevant to others but not relevant to all. How could the Deanery help facilitate working together by some - but not all - on issues such as the impact of the Olympic developments or the challenges of estate based ministry? And how can we pick-up on the parts we are not reaching? For example, there is no mention in the profiles of a serious relationship with Waltham Forest College, a hugely significant organisation with a population larger than some of our parishes. Neither does there seem to be much engagement with industrial units, although several parishes mention these are being within their parish boundaries. (Is this a case for someone with a deanery brief as industrial chaplain?)

There is a great deal of splendid engagement with a whole range of institutions, but some profiles say clearly that there are particular schools and faith community organisations (to take two significant examples) which they do not relate to. Can the Deanery help to provide ministry to organisations the parish cannot - or would rather not - engage with? Would developing a greater sense of specialist portfolios for deanery clergy and others help to respond to this challenge?

Tackling a crisis situation?

The profiles confirmed for me the extent of the crisis surrounding the Church of England and the occasional offices, especially funerals and weddings. Clearly there is a disparity between the large number of funerals being taken by some parishes and the very small numbers being taken by others.

In addition to this situation, I have gathered statistical information showing that around 85% of marriages in the Borough are civil rather than religious ceremonies, that the Church of England is responsible for taking less than a third of all funerals and that we are baptising only around 2.5% of the new-born population.

The positive news is that almost all of our congregations have seen a growth in numbers since 2001. My strongest recommendation here, however, is that the Deanery establish a “think tank” on the occasional offices at the earliest opportunity.

And finally

It seems to me that the parish profiles are the basis for much celebration of how God is at work, not least through the Church of England, in Waltham Forest. Can the Deanery take a few steps, by the grace of the Holy Spirit, to give greater glory to Christ our Lord?

Steven Saxby
Waltham Forest Deanery Development Officer

People

Waltham Forest Deanery Statistics

Note: At this level Census Age Profile doesn't distinguish between men and women, so 60 - 64 age group assumed to have equal numbers of each (for Waltham Forest is actually 49.9 % male: 50.1% female).

Note: Data is Crown Copyright 2003: Source ONS website or ONS CD/DVD Data Rom - Key Statistics for Local Authorities in England and Wales

(Don Cardy - format amended by Steven Saxby - 25/02/07)

Parish	All People	Resident in Households	Resident in Communal Establishment	Children 0 - 15	People 16 - Retirement Age	People Retirement Age	Employed (16-74 yrs)
Chingford St Peter & St Paul	20267	20124	141	3747 (18%)	12055	4464 (27%)	9258
Chingford St Anne	9003	8920	83	1911 (21%)	5257	1835 (26%)	3695
Chingford St Edmund	15765	15636	129	3498 (22%)	9611	2661 (22%)	6834
Harrow Green	10419	10369	50	2525 (24%)	6926	981 (12%)	4024
Highams Park	10918	10822	96	2367 (22%)	6921	1620 (19%)	5168
Leyton St Mary	14091	14027	64	3086 (22%)	9475	1522 (14%)	5642
Leyton All Saints	8773	8763	10	2295 (26%)	5610	866 (13%)	3131
Leyton Christ Church	7319	7303	17	1319 (18%)	5174	826 (14%)	3326
Leyton Emmanuel	4530	4530	0	999 (22%)	3087	448 (13%)	2038
Leyton St Catherine	11146	10899	243	2256 (20%)	7505	1391 (16%)	4887
Leytonstone St Andrew	3115	3079	36	543 (17%)	2227	342 (13%)	1491
Leytonstone St John	6411	6256	153	1154 (18%)	4579	683 (13%)	3055
Leytonstone St Margaret	10979	10934	45	2628 (24%)	7183	1164 (14%)	4343
Walthamstow Team	30275	29865	411	6250 (21%)	20268	3746 (16%)	12994
Higham Hill EP	14162	14160	0	3477 (25%)	9072	1606 (15%)	5663
Walthamstow St Barnabas	5744	5606	138	1231 (21%)	3771	739 (16%)	2179
Walthamstow St John	11660	11654	6	2662 (23%)	7532	1455 (16%)	5468
Walthamstow St Michael	8886	8853	32	1694 (19%)	6095	1088 (15%)	4187
Walthamstow St Peter	6935	6863	72	1429 (21%)	4337	1171 (21%)	3073
Walthamstow St Saviour	7114	7097	17	1588 (22%)	4781	734 (13%)	2960
Waltham Forest Deanery	217512	215760	1743	46659 21%	141460	29348 17%	93416 66%

Religion

Except other/not stated

Waltham Forest Deanery Statistics

Note: Data is Crown Copyright 2003: Source ONS website or ONS CD/DVD Data Rom - Key Statistics for Local Authorities in England and Wales

(Don Cardy - format amended by Steven Saxby - 25/02/07)

Parish	Christian	Buddhist	Hindu	Jewish	Muslim	Sikh
Chingford St Peter & St Paul	73%	0%	1%	1%	4%	0%
Chingford St Anne	71%	0%	1%	1%	5%	0%
Chingford St Edmund	68%	0%	1%	1%	7%	0%
Harrow Green Holy Trinity ...	50%	1%	2%	0%	19%	1%
Highams Park All Saints	68%	0%	1%	1%	5%	0%
Leyton St Mary ...	53%	1%	2%	0%	19%	1%
Leyton All Saints	47%	0%	2%	0%	30%	0%
Leyton Christ Church	48%	1%	3%	1%	21%	3%
Leyton Emmanuel	55%	0%	1%	1%	17%	1%
Leyton St Catherine & St Paul	48%	1%	2%	1%	21%	1%
Leytonstone St Andrew	52%	0%	1%	1%	16%	1%
Leytonstone St John	45%	1%	2%	1%	22%	1%
Leytonstone St Margaret ...	55%	0%	2%	0%	16%	1%
Walthamstow Team	49%	0%	3%	1%	20%	0%
Walthamstow St Andrew	56%	1%	3%	0%	14%	0%
Walthamstow St Barnabas ...	45%	0%	2%	1%	28%	1%
Walthamstow St John	62%	0%	2%	1%	9%	0%
Walthamstow St Michael ...	50%	1%	2%	0%	18%	0%
Walthamstow St Peter-in-the-Forest	65%	0%	1%	1%	9%	0%
Walthamstow St Saviour	51%	1%	2%	1%	22%	0%
Waltham Forest Deanery	57%	0%	2%	1%	15%	1%

Ethnicity

Waltham Forest Deanery Statistics

Note: Data is Crown Copyright 2003: Source ONS website or ONS CD/DVD Data Rom - Key Statistics for Local Authorities in England and Wales

(Don Cardy - format amended by Steven Saxby - 25/02/07)

Parish	White	Mixed	Asian	Black	Chinese	Other
Chingford St Peter & St Paul	91%	2%	3%	4%	0%	0%
Chingford St Anne	89%	2%	4%	5%	0%	0%
Chingford St Edmund	82%	3%	5%	9%	0%	0%
Harrow Green Holy Trinity ...	47%	5%	19%	26%	1%	2%
Highams Park All Saints	86%	2%	4%	6%	0%	0%
Leyton St Mary ...	49%	4%	18%	27%	1%	1%
Leyton All Saints	42%	4%	26%	27%	1%	1%
Leyton Christ Church	52%	4%	24%	18%	1%	2%
Leyton Emmanuel	53%	4%	14%	28%	0%	1%
Leyton St Catherine & St Paul	54%	5%	22%	17%	1%	1%
Leytonstone St Andrew	66%	3%	18%	12%	0%	1%
Leytonstone St John	59%	4%	23%	12%	1%	1%
Leytonstone St Margaret ...	52%	4%	15%	26%	1%	1%
Walthamstow Team	58%	4%	20%	15%	1%	1%
Walthamstow St Andrew	61%	4%	14%	18%	1%	2%
Walthamstow St Barnabas ...	46%	4%	30%	18%	1%	2%
Walthamstow St John	71%	4%	9%	15%	0%	1%
Walthamstow St Michael ...	61%	4%	19%	13%	1%	2%
Walthamstow St Peter-in-the-Forest	76%	4%	8%	11%	0%	1%
Walthamstow St Saviour	53%	4%	21%	20%	1%	1%
Waltham Forest Deanery	64%	4%	15%	16%	1%	1%

Households

Waltham Forest Deanery Statistics

Note: Detached and semi-detached numbers are for all properties, whether occupied or not (i.e. a holiday home or vacant); percentage is of all properties.

Note: Data is Crown Copyright 2003: Source ONS website or ONS CD/DVD Data Rom - Key Statistics for Local Authorities in England and Wales

(Don Cardy - format amended by Steven Saxby - 25/02/07)

Parish	Household s All Properties	Household s with Residents	Detached and Semi- detached (see note)	Average persons per household	Average number of rooms per household	Household s with an occupancy rating indicating over- crowding
Chingford St Peter & St Paul	8786	8610	4441	2.34	5.22	663
Chingford St Anne	3872	3826	1640	2.33	4.85	332
Chingford St Edmund	6376	6248	1612	2.50	5.04	571
Harrow Green Holy Trinity ...	4391	4134	465	2.51	4.33	1077
Highams Park All Saints	4425	4359	1044	2.48	5.19	376
Leyton St Mary ...	6052	5848	741	2.40	4.41	1337
Leyton All Saints	3345	3245	472	2.70	4.46	827
Leyton Christ Church	3159	3079	319	2.37	4.65	536
Leyton Emmanuel	2179	2112	172	2.15	4.06	386
Leyton St Catherine & St Paul	4483	4316	675	2.53	4.95	766
Leytonstone St Andrew	1383	1320	265	2.33	4.79	260
Leytonstone St John	2633	2551	327	2.45	4.89	432
Leytonstone St Margaret ...	4634	4484	515	2.44	4.50	985
Walthamstow Team	13169	12740	1688	2.34	4.43	2482
Walthamstow St Andrew	5902	5710	893	2.48	4.55	982
Walthamstow St Barnabas ...	2219	2158	308	2.60	4.61	440
Walthamstow St John	4979	4818	581	2.42	4.80	543
Walthamstow St Michael ...	4160	4038	357	2.19	4.35	653
Walthamstow St Peter-in-the- Forest	2918	2867	925	2.39	5.08	301
Walthamstow St Saviour	3046	2977	405	2.38	4.37	564
Waltham Forest Deanery	92111	89440	17845	2.41	4.69	14513

Deprivation

Waltham Forest Deanery Statistics

Average Rank for each Parish in Government 2004 Index of Multiple Deprivation; Rank is for England where 1 is most deprived and 32482 least deprived;

(Don Cardy - format amended by Steven Saxby - 25/02/07)

Parish	OVER ALL IMD	INCOME	EMPL OYME NT	HEALTH DEPRIV ATION AND DISABIL ITY	EDUCAT ION SKILLS AND TRAININ G	BARRIE RS TO HOUSIN G AND SERVIC ES	CRIME AND DISORD ER	LIVING ENVIRO NMENT
Chingford St Peter & St Paul	15120	15464	18615	15592	18125	4547	12450	16468
Chingford St Anne	10335	10348	12760	10612	11532	5642	14200	7986
Chingford St Edmund	10226	12739	16022	13719	13232	5213	7905	4633
Harrow Green	5356	4725	8361	7007	13895	2228	4716	9533
Highams Park	13711	15424	18868	15028	18311	5665	9117	10446
Leyton St Mary	6708	6353	10043	8838	16702	3318	4298	9719
Leyton All Saints	5473	4494	8758	8391	12360	2607	6100	11111
Leyton Christ Church	10930	9197	13494	11773	20456	4113	10221	11719
Leyton Emmanuel	6845	6926	12531	9621	13072	2822	9335	2620
Leyton St Catherine	9668	9292	11926	10651	21985	4616	6021	10539
Leytonstone St Andrew	9691	9886	11097	10120	26818	3765	3963	14203
Leytonstone St John	10055	8755	12073	9416	23193	5222	7865	11712
Leytonstone St Margaret	6504	4828	9147	7670	13211	3253	7688	12389
Walthamstow Team	7059	6509	10153	8826	19110	4405	5169	7042
Higham Hill EP	6437	6208	10139	8736	11185	4083	8955	4176
Walthamstow St Barnabas	7902	6750	10700	9545	16560	4192	6981	7605
Walthamstow St John	10131	11350	16164	13117	13829	4619	10108	4214
Walthamstow St Michael	7865	8445	13521	10376	20250	4310	3036	5241
Walthamstow St Peter	8850	10859	13390	12552	17362	2549	7628	5669
Walthamstow St Saviour	5653	4999	8792	8212	13221	4218	5013	3920
Waltham Forest Deanery	8890	8915	12581	10687	16515	4187	7602	8606

Reflections on the Future

There are very few who believe that the circumstances that we face in our mission and ministry now will be the same in 20 or even 10 years time. We only have to look at how things have changed over the last decade to see this!

As we look at the aspects of mission and ministry that we consider will be most significant over the next decade, it would be good for us to keep the following series of questions in our minds: What do we need to do? How will this action be better? What would things be like if we don't take a particular course of action? I would suggest that indifference and lethargy are not alternatives for us as we look to the future – fortunately, this does not seem to be the case in any of the stories from our parishes!

As we look to our future life in the Deanery three things seem inescapable in their significance.

The opportunities that face us

These are many and seem to be more than ever before. However, they are more than any one parish can take on, and indeed there are areas that affect all of us where collaborative working can reduce unnecessary duplication. We could all make a list of the opportunities that exist, but some of the most obvious that have come through in this document include our work among children (both in schools and in more informal settings), the forthcoming Olympics, multi-faith engagement, and the care of the needy in the Community.

Our concern about resources

This is a common theme, and we don't want to find that the vision for the future stumbles because of a lack in this area. We are all grateful for the financial assistance that we as a deanery have received and are receiving from the wider Diocese, but we all know from our own experience that we need to move nearer to being able to 'pay our way'. Seemingly, more has to be found from less. Of course, this does not just involve finances, but other aspects of our stewardship including our time and gifts.

Our theology

We believe in a Trinitarian God, in whose image we are created. As a consequence we can celebrate our unity in diversity – even though on occasion it seems a difficult thing to do as we may seem so different to each other! Perhaps one of the most important things to have come from this exercise is the increased awareness of our need for collaboration and working together: we realise that we cannot do the things alone now that we used to in the past. We need each other.

What might the future look like?

Of course it is difficult to know, but there are some areas where we know we need to make a mark.

Working together

Many have mentioned this, but how does it happen? We have some wonderful examples to guide and encourage us: the E4 Group, as well as the recently signed ecumenical covenant between many of the Leytonstone churches. Maybe what experience has taught us is that 'you can choose your friends but your relatives are chosen for you'. We know who we want to invite to the party, and maybe the 'self developing natural networks', which form around relationships and common issues and concerns, are the way ahead. In this more than in many areas, we need to be aware of the principle that we move from the grass roots rather than anyone seeking to impose from above. The resultant networks may look untidy, but they will work because there will be the common ingredients of interest, concern and commitment there right from the start. The Christian Kitchen offers one example, among several, of such positive, non-formalised co-operation by diverse churches within Waltham Forest

This may represent a change from Anglican teams or groups – but it takes us to the questions: "What is the church of God doing here? How can we work with our ecumenical brothers and sisters?"

In terms of action, maybe we need to broaden our horizons and expectations, and be more radical about our working together and who we work with.

The assumption about growth

It is evident from all the parish profiles that there is an expectation and commitment to the task of growing the work of the Kingdom. Additionally, not only the outputs from the away day, but also the spirit and tenor of many of the conversations indicated this. There is a quiet optimism about the future – a faith that God will do his work in our Community.

As we take our next steps, we need to keep this thought within our hearts, as when the times of disappointment come, as they surely will, we need renewed faith in God and his purposes for us.

A final word

We know that whether we are lay or ordained, God does not in the first instance call us to serve him. He calls us to be with him. It is as he becomes our 'all in all', that we are then in a position for him to work through us. Otherwise, it is so easy for our serving to become just another task or job that we do in the daily round. As the letters to the seven churches in Revelation make clear, it is not so much about what we do, but where are we in respect of our 'first love for the Lord'. If we have lost this, then whatever we do, it will fade to nothing.

As we face the future we need to continue to encourage each other to develop our interior spiritual life both as individuals and Christian communities. The way in which we do this will be different as our traditions differ, but as we continue the path of discipleship, we know that we will experience God's direction and blessing for the future.

Paul Reily
Area Dean

Diocesan Guidelines for a Deanery Vision

These guidelines were produced by the Diocese and offered to deaneries seeking to explore God's possibilities for mission in their local areas. They offered a recommended process that invited deaneries to reflect on the "Guiding Principles for our Response to God's Mission", then to gather factual information, thus providing a framework in which to 'dream dreams' and consider possibilities.

The Mission of God

The church's work in mission is always to be a response to God's mission to the world. God's redeeming love for the world in Jesus Christ by the power of the Holy Spirit is the Good News. We live and share the liberating truth of God in Christ.

The Scriptural record reveals to us that God's mission in Christ creates a new human community as witness to God's redeeming purpose for all creation. That new community – the church born and nurtured in the risen life of Jesus Christ – is called to be the servant of the mission of God.

The full and rich themes of our faith, set out in Scripture and in the Creeds, inform and direct how we fulfil our calling today.

Responding in the Diocese of Chelmsford

This diocese has committed itself to serve all the people of Essex and East London in the name of Jesus Christ. Our parishes, sector ministries, deaneries and Areas are testimony to our desire to meet the challenge of living the Good News among and for all the people we serve.

In seeking to give direction and value to our calling we have committed ourselves to meet the challenge of the Five Marks of Mission. These marks reflect the holistic nature of mission that embraces evangelism, Christian growth, care for the needy, social justice and ecology:

1. *Tell* To proclaim the good news of the Kingdom.
2. *Teach* To teach, baptise and nurture new believers.
3. *Tend* To respond to human need by loving service.
4. *Transform* To seek to transform the unjust structures of society.
5. *Treasure* To strive to safeguard the integrity of creation and sustain and renew the life of the earth.

The Bishops' commitment

As the Bishops of this diocese, encouraged by our colleagues and supported by the Bishop's Council, we are committed to this faith and to these Marks of Mission. We believe they provide a framework for us to fulfil our calling under God at this time. In furtherance of this, we ask all the people, parishes and deaneries of the diocese to explore what this means for each locality.

To give shape to this exploration it will be helpful to bear in mind the following themes:-

God's kingdom and our world – Jesus ministry was centred on the now and not yet of the Kingdom of God. This included attention to the seemingly least important in the present age, e.g. children and the poor. A Kingdom focus will expand our horizons beyond the church to embrace all the institutions and people of our communities as the focus of God's mission.

Presence in a time of change – In keeping with the example of Jesus, our mission and ministry needs to be contextually relevant and self-giving as we seek to demonstrate what it means to be fully human and whole. We are called to serve our communities as they live through enormous cultural and social change. This applies on the grand scale of community regeneration as well as the pastoral care of individuals. We are called to find ways to live a holistic lifestyle in a complex mix of cultural expectations.

Nourishing our life as Christians is the bedrock upon which we build mission and ministry. We must make a corporate and individual priority for worship, receiving the sacraments, prayer and the study of Scripture. Resources available include retreats, spiritual direction, quiet days, pilgrimage, conferences, holidays and study. The valuing and growth of our own spirituality is of particular importance in a culture where spiritual interest and longing for authentic experiences of God is increasing.

Vocation of all - Every Christian (irrespective of age) is called by God as a minister and ambassador as a consequence of their baptism. For most, this calling is in the everyday world of work, school, home and leisure. Christians are also called to contribute, in some way, to the life of their local worshipping congregation. Some will be called additionally to serve the church and the world as an authorized minister – lay or ordained. All vocations, although different, are of equal value and all need to be nurtured. We want to stress the importance of work with all ages in church and with young people in schools.

Working together is to be a hallmark of Christian witness, service and life. This requires valuing experiences, insights and gifts different from our own and being prepared to work across social boundaries whether of nation, race, creed and language or across ecclesiastical boundaries of parish, deanery, diocese, denomination and tradition. Cooperation internationally, ecumenically and locally can build up all aspects of church life and fuel mission effectiveness.

Developing leadership - To build up the church, God gives a variety of gifts of leadership to both ordained and lay people. Leadership is most needed in times of change to enable individuals and communities to learn and adapt. The development and support of Christian leaders is of great importance in furthering the mission of God in our day and age.

A learning people - As Christians, we are all called to a life of discipleship which includes an ongoing openness to learn and grow under the guidance of God's Spirit. This calls for the appropriate education and training for all God's people at local, diocesan and national levels.

John Gladwin
Bishop of Chelmsford

David Hawkins
Bishop of Barking

Laurie Green
Bishop of Bradwell

Christopher Morgan
Bishop of Colchester

January 2006

Diocesan and Barking Area Vision Statements

DIOCESE OF CHELMSFORD

Our Passion

Jesus – Proclaiming and Living out God's love for all people

Our Aspiration

To be **a Transforming Presence** in every Community, Open and Welcoming to all, and Serving all.

Our Resources

Faithful people, Prayer and Worship, Visionary leadership, Liberating gifts

BARKING EPISCOPAL AREA

BARKING 2020 VISION

Key Messages

- Grow the church in numbers and depth of discipleship. '*See where God is at work and join in*' *Archbishop Rowan*
- Increase the leadership and ministry in our churches but with less reliance on full-time stipendiary clergy.
- Encourage *inherited* church mission and *fresh expressions* mission in each community.
- Encourage '*mixed economy*' staffing for '*mixed economy*' churches.
- Full-time Stipendiaries in future need to be recruited and trained to be skilled team leaders of mixed economy teams, strategically deployed to lead clusters of churches.
- Each deanery must work with this in ways and means and at a pace that is appropriate, attending to the different dynamics of rural, urban and suburban.

+David
16 November 2006

Endnote

The foregoing is a tremendous testimony to the commitment of the congregations and their leaders in the Deanery of Waltham Forest. There is great encouragement to be had in reading the individual stories of the parishes that are represented in the profiles. I am very grateful that they have been brought to us by the hard work of so many in the parishes, working alongside members of the Deanery team: Colin Setchfield (Lay Chair), Alison Kennedy and David Waller (Assistant Area Deans) and especially Steven Saxby (Deanery Development Officer) who masterminded so much of the process, and accomplished much of the hard spade work needed to bring this project to fruition.

Paul Reily
Area Dean

Acknowledgements

Editing this document has been a challenging and rewarding experience! I am grateful to a great many people who have provided information and other material for inclusion, and principally to the incumbents, churchwardens and PCCs of all 20 parishes within the Deanery.

My thanks go to Alison, Colin, Paul and Fr David for helping to draft some of the profiles and to others who provided me with information, not least Satwant Pryce and Dominic Millen of the London Borough of Waltham Forest and Sandra Turner, Don Cardy and Paul Bowtell of the Diocese of Chelmsford.

I am grateful to Dr Graham Gould for some advice on editing, to Mick Scotchmer for some technical support and also to Wendy Eackett at the Cornerstone and Sarah Collins at Peterhouse for their administrative help.

Most of all, my thanks go to my ten year old son Joshua whose lessons on inserting the images and whose editing of the map were of critical importance to the creation of this document.

As Deanery Development Officer it has been heartening to see several references in the profiles to pieces of work that I have, in some way, encouraged or helped to develop since coming to Waltham Forest in 2002. Before I began working on this document I was beginning to indicate that my role as development officer, originally envisaged for five years, was coming to a natural end. I am delighted that this project has served as a culmination of and swansong for my development work; I hope and pray that it will be of some benefit to the Deanery over the next few years.

Steven Saxby
Deanery Development Officer

Deanery Officers' Contact Details

Bernard Aarons – Deanery Treasurer
020 8521 3953 – baarons@fsmail.net

Jean Elliott – Deanery Children's Work Development Worker
020 8509 3746

Revd Alison Kennedy – Assistant Area Dean
020 8509 1135 – alison_m_kennedy@hotmail.com

Diana Kennedy – Deanery Secretary
020 8524 3960 – dmvchkennedy@hotmail.com

Revd Paul Reily – Area Dean
020 8539 6361 – paul@reily.co.uk

Fr Steven Saxby – Deanery Development Officer
020 8520 3854 – stevensaxby@btinternet.com

Colin Setchfield – Lay Chair
020 8524 4386 – colin.setchfield@lineone.net

Fr David Waller – Assistant Area Dean
020 8520 2036 – d.a.waller@btinternet.com

